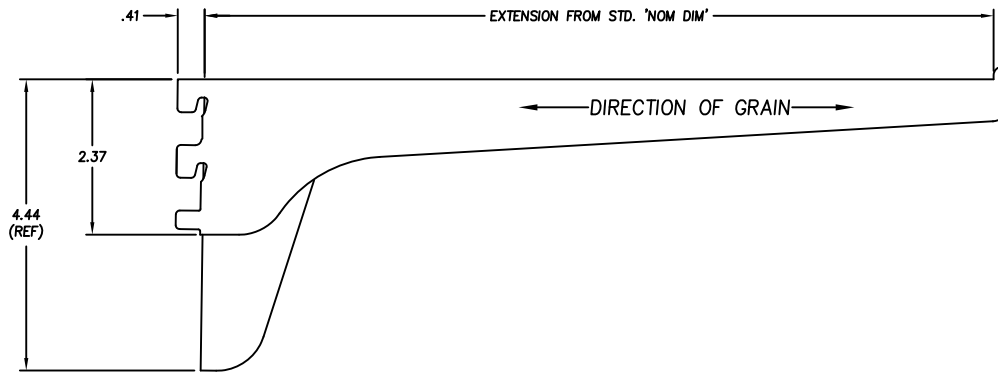
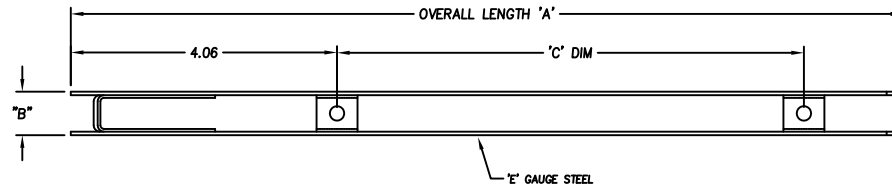


PART NO.	'NOM DIM'	LENGTH 'A'	DIM 'B'	DIM 'C'	MATERIAL GAUGE 'E'
B01-54081-224	8"	8.75	.660	3.12	.060 (16 GAUGE)
B01-54101-224	10"	10.75	.660	5.00	.060 (16 GAUGE)
B01-54121-224	12"	12.70	.660	7.00	.060 (16 GAUGE)
B01-54141-224	14"	14.70	.690	9.00	.075 (14 GAUGE)
B01-54161-224	16"	16.70	.690	11.00	.075 (14 GAUGE)



APPLICATION DRAWING

CUSTOMER P/N (IF APPLICABLE)	REV.
------------------------------	------

THIS PRINT IS THE PROPERTY OF RPC AND ITS DUPLICATION, RETENTION OR TRANSMITTAL TO OTHERS IS PROHIBITED WITHOUT PRIOR CONSENT.



Rockford
Process Control, Inc.

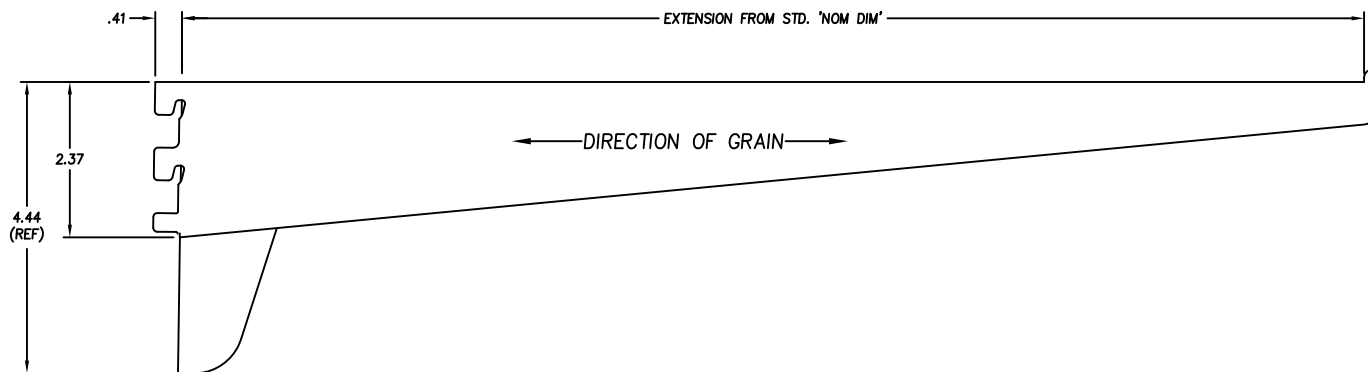
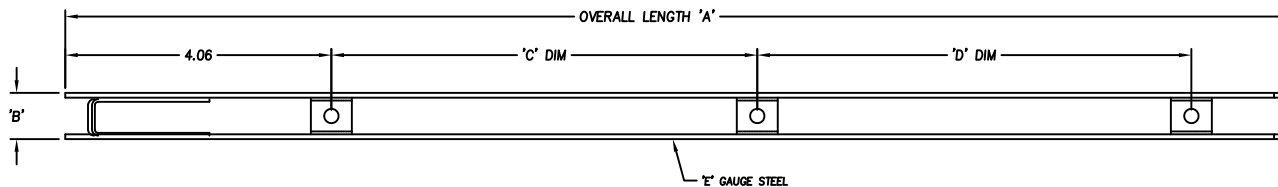
ECR#	REV.	DESCRIPTION	BY	DATE

MATERIAL	SEE CHART POLISHED WITH ZINC PLATE FINISH
FILENAME	B0154XX1APP
CHKD BY DATE	
DRAWN BY	CWW
DATE	9/5/12

SCALE (SIZE)	1:1	SHT NO.	1	OF	2
PART DESCRIPTION DOUBLE BRACKET, SHELF SUPPORT					
PART NUMBER	B01-54XX1-APP			REV.	

PART NUMBER
B01-54XX1-APP REV.

PART NO.	'NOM DIM'	LENGTH 'A'	DIM 'B'	DIM 'C'	DIM 'D'	MATERIAL GAUGE 'E'
B01-54181-224	18"	18.70	.690	6.50	6.63	.075 (14 GAUGE)
B01-54201-224	20"	20.70	.690	7.50	7.63	.075 (14 GAUGE)
B01-54221-224	22"	22.70	.690	8.50	8.63	.075 (14 GAUGE)
B01-54241-224	24"	24.70	.690	9.50	9.63	.075 (14 GAUGE)



APPLICATION DRAWING

CUSTOMER P/N (IF APPLICABLE) REV.

THIS PRINT IS THE PROPERTY OF RPC AND ITS DUPLICATION, RETENTION OR TRANSMITTAL TO OTHERS IS PROHIBITED WITHOUT PRIOR CONSENT.



Rockford Process Control, Inc.

ECR#	REV.	DESCRIPTION	BY	DATE

MATERIAL SEE CHART POLISHED WITH ZINC PLATE FINISH	
FILENAME B0154XX1APP	CHKD BY DATE
DRAWN BY CWW	DATE 9/5/12

SCALE (SIZE) 1:1	SHT NO. OF 2 OF 2
PART DESCRIPTION DOUBLE BRACKET, SHELF SUPPORT	
PART NUMBER B01-54XX1-APP	REV.