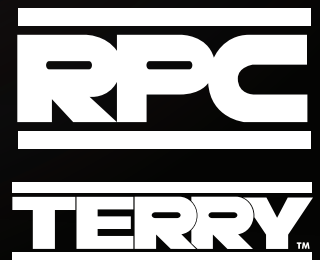


ROCKFORD PROCESS CONTROL/
TERRY™ HINGE & HARDWARE 2017

HINGES AND HARDWARE CATALOG



How do you define a qualified supplier?

As Rockford Process Control planned for a successful future, one of the questions we asked ourselves was: "What do we need to look for in establishing supplier partnerships to assure that we have a dependable, trustworthy and competitive supply chain?"

Our answer was to find companies with:

- >> **Experience and leadership**
- >> **Expertise with the products**
- >> **A high level of customer service**
- >> **Consistent quality, on-time delivery and competitive pricing**

We believe that if this concept is important to our company's future success, it should be important to our customers as well. That is why this definition has become our mantra for serving our customers.

Experience and expertise count. In 1983, Paul Colloton and Dick Gleichman founded RPC with the determination that quality was not an aim but a direct result of a consistent commitment to hard work and listening to customer needs. In 1987, they acquired the institutional market leading National Lock Casework Hardware hinge product line from Amerock. An emphasis was put on updating equipment and improving the quality control. This product offering is still the recognized standard for the institutional, hospital and educational markets.

To better serve our customers varied needs, RPC acquired the assets of Terry Hinge and Hardware in 2007. The Terry brand has a 50 year heritage of providing manufactured and imported product lines.

As our name suggests, Rockford Process Control's main competitive advantages are:

- >> **Design**
- >> **Manufacturing**
- >> **Quality control processes**
- >> **Customer satisfaction**

To remain competitive in this global market we have our own fulltime staff in Asia tasked with finding the best factories to build product to our designs and specifications. We do "in factory" inspections during manufacture to insure product consistency and quality. When you, or your customer's, production schedule and reputation depend on timely delivery of quality hinges and hardware, you can put your trust in Rockford Process Control.

Green Hinges for Green Cabinets

Now you can specify hinges for your project's commercial and institutional cabinets to be GREEN or qualify for LEED™ certification points. Rockford Process Control domestically manufactured hinges reduce your environmental impact in a variety of ways: we utilize steel with recycled content, fabricate the component parts using water soluble lubricants, recycle all material punched out of the product during the fabrication process and package in fully recyclable shipping containers. When you see the "American Flag" icon on the following pages you can be assured that the product was manufactured in our centrally located factory in Rockford, Illinois.



Rockford Process Control – Your Hardware Solution Provider

Custom and Special Product Solutions

RPC/TERRY wants to provide products to meet your specific needs. If you need an application specific hinge, pull, stamped bracket or other piece of hardware, please don't hesitate to contact RPC's Sales Manager at 815-966-2000 or email "sales@rockfordprocess.com" with your exact needs.

Our engineering staff will evaluate your need and help you design the right product for your application. For a competitive quote, please send us a sketch or sample of your custom part including material and quantity requirements. If you have a target price you need to meet, let us know and we will strive to meet or beat your target.

We are always seeking new products to expand our ability to serve our customers, old and new. Please let us know what your needs are so we can provide solutions for your needs.

Import Expertise

RPC/TERRY has our own staff in China to find the best supplier for a product. Our importing capabilities include providing on going quality control, refining manufacturing techniques and obtaining the best possible value for our customers. Please talk to us about becoming your direct container supplier for all of your high-volume product needs.

LIMITED WARRANTY

Rockford Process Control, Inc. (RPC) warrants its Hinges and hardware against defects in material and workmanship for a period of twelve (12) months from the date of shipment.

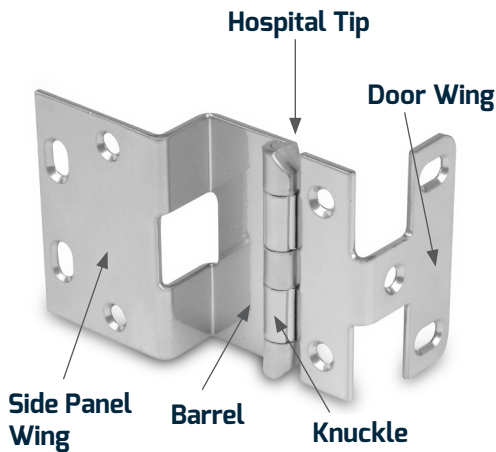
RPC will send the original consumer purchaser, without charge, a new RPC/TERRY Hinge to replace any defective RPC/TERRY Hinge subject to this warranty. RPC specifically does not warrant removal of the defective Hinge or installation of a new Hinge. This warranty does not cover Hinges that have been incorrectly installed, exposed to excessive loads or abuse in any way. This warranty is a warranty of hardware replacement only. No other warranty is expressed or implied.

Alphabetical Index

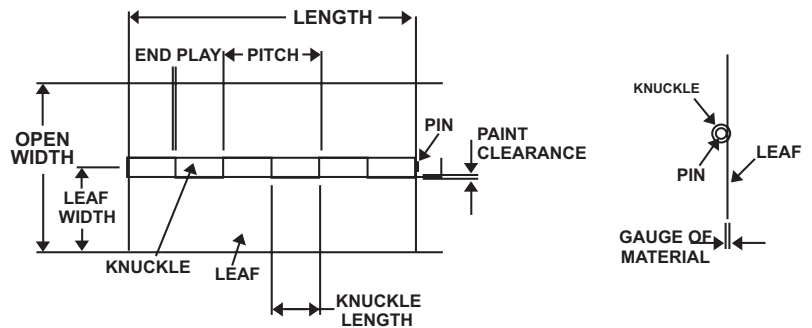
Product	Page
Button Catches	31
Café Hinges	29
Casework Hardware	29-32
Coat Hooks	32
Continuous Hinges	17-26
Door Hardware	12-14
Double Acting Hinges	29
Elbow Catches	29
Five-Knuckle Overlay Hinges	5-9, 27
Five-Knuckle Lipped Hinges	9
Flush Hinges	11
Glass Door Hardware	30
Institutional Hinges	5-11, 27
Leaf Hinges	28
Lid Supports	38-39
Lift-Off Hinges	28
Magnetic Catches	35-37
Magnetic Touch Latches	34
Non-Mortise Shutter Hinges	28
Pilasters and Steel Standards	43
Pulls	33
Roller Catches	30
Shelf Pins	40
Shutter Pins	35
Standards and Brackets	41-43
Wire Doors	15-16
Work Station Brackets	44-45

HINGE TERMINOLOGY

Institutional Hinge



Continuous Hinge



Barrel: The portion of a hinge formed by knuckles of the door leaf and side panel leaf when joined by the pin.

Door Wing: In a five-knuckle hinge, it is the hinge leaf that is mounted to the door. It has two knuckles.

End Play: The amount of axial movement between the leaves measured parallel to the axial centerline of the pin.

Flush: A solid door that sits within the cabinet opening so that the front surface of the door is even with the front of the cabinet side panel.

Gauge: The thickness of the material from which a hinge is produced.

Hospital Tip: A hinge barrel whose ends are beveled towards each other.

Inset: Regarding Wire Doors: The wire door sets or rests inside the cabinet opening with the vertical members flush with the side panels. *See Flush.*

Knuckle: The curled hollow portion of a hinge through which the hinge pin is inserted. Also known as the curl.

Leaf: The segment of the hinge extending outward from the knuckle, which rotates around the hinge pin.

Leaf Width: The dimension from the centerline of the pin to the outside edge of the leaf measured perpendicular to the axial centerline of the pin.

Length: The dimension from one end of the hinge to the other measured parallel to the axial centerline of the pin.

Lipped: A door with a rabbet cut around the back edge of the door's perimeter. The back portion of the door recesses into the cabinet. The remaining front part of the door will overlay the cabinet side panel.

Non-Removable Pin: A hinge pin secured by a knurl on the pin and spun on both ends or by other means.

Onset: Regarding Wire Doors: The wire door frame sets or rests in front of the side panels.

Open Width: The dimension from one side of the hinge to the other outside edge measured perpendicular to the axial centerline of the pin.

Overlay: A door which is mounted to the front of the cabinet and covers a portion of the cabinet side panel.

Pin: The wire or rod which extends through the hinge about which the leaves revolve. The pin holds the leaves of a hinge together.

Pin Types

- Spun Pin
- Loose Pin
- Double Oval Pin
- Sheared Tight Pin (no head)
- Staked Pin



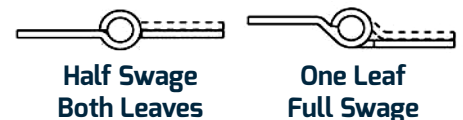
Pitch: The dimension from a point on the knuckle to the same point on an adjacent knuckle on the same leaf.

Reveal: In an overlay door mounting application, the exposed portion of the cabinet side panel not covered by the door when closed.

Side Panel Wing: In a five-knuckle hinge, it is the hinge leaf that is mounted to the cabinet side panel. It has three knuckles.

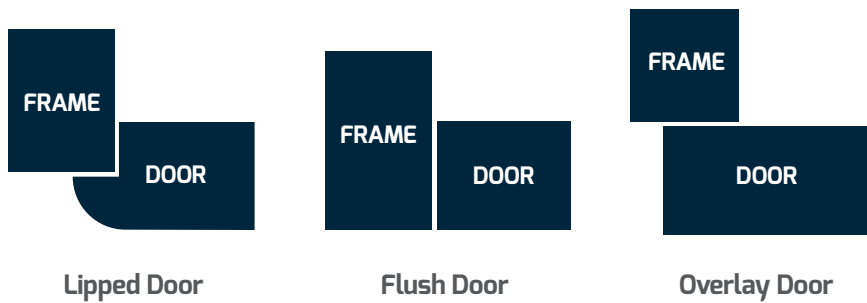
Side Play: The amount of movement of the leaves perpendicular to the axial centerline of the pin. Caused by excessive clearance between the pin and the inside diameter of the knuckle.

Swaging: Forming one or both leaves toward or beyond the centerline of the pin. Swaging reduces the distance between the leaves when the hinge is closed to a parallel position.

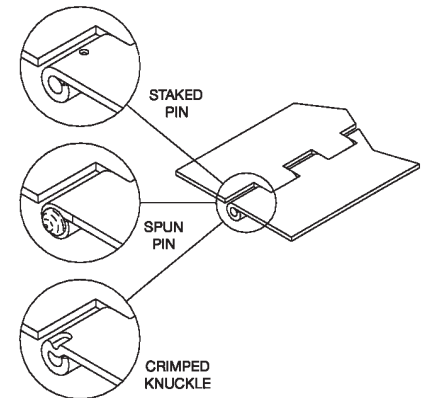


HINGE TERMINOLOGY

Door Mounting Configurations



Pin Retention Methods



ORDERING INFORMATION

This catalog represents the blending of two companies' product lines. To minimize confusion by our valued customers, we have retained RPC product numbers and TERRY product numbers. This eliminates the need for you, our customers, to make changes in your computer systems.

RPC part numbers consist of the Model Number followed by the finish code as shown to the right.

Model No.:

376 Overlay Hinge, 3/4" x 13/16"

Finish Code:

P28 Chrome Powder Coat

Part No. **376-P28**

Standard and Custom Finishes for Casework Hinges, Pulls and Wire Doors

RPC's in-house powder coating system allows us to match colors to meet your color specification. Our powder coating process provides you with a durable, epoxy-based finish.

Finish Codes: To simplify manufacturing and inventory control, RPC/TERRY has reviewed and consolidated its finish offerings into Standard and Special colors. Standard colors will be stocked as noted for a given product.

Special colors are available. Special color requests are subject to lead times, minimum order size, special materials up-charges and custom set-up charges.

Please contact RPC Customer Service to discuss minimums, lead times and up-charges for your Special or Custom color requirements and for color samples.

Standard Powder Coat Colors

1D	Gloss Black
23	Matte Black
E51	Gloss White
E47	Beige
E48	Dove Grey
P28	Chrome

Plated Finishes

26D	Dull Chrome
26S	Brushed Chrome

Special Finishes

Upon Request

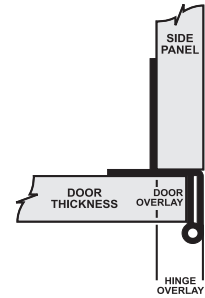
THE ROCKFORD HINGE™

These hinges have been the industry standard for five-knuckle hinges for over 75 years!

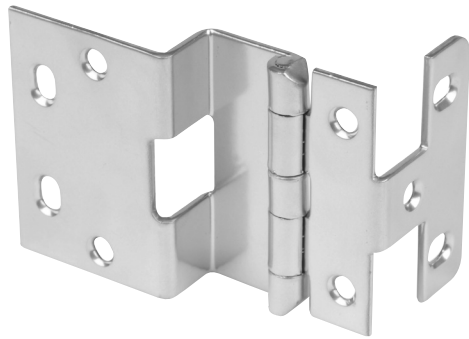
They exceed ANSI/BHMA 156.9 Grade 1 requirements.

Hospital tips, 2-3/4" height, 270° opening angle, drilled knuckle ID.

All mounting holes are countersunk for #8 flat head screws.



Part Number 374



Side Panel: 3/4" (19mm)
 Door Thickness: 3/4" (19mm)
 Hinge Overlay: 23/32" (18.3mm)
 Door Overlay: 15/32" (11.9mm)
 Gauge: .095" (2.4mm)
 Hole Pattern: 32mm centers with 37mm setback
 Pack: 100/case, cell packed
Specify finish when ordering.



Part Number 376, 376SS

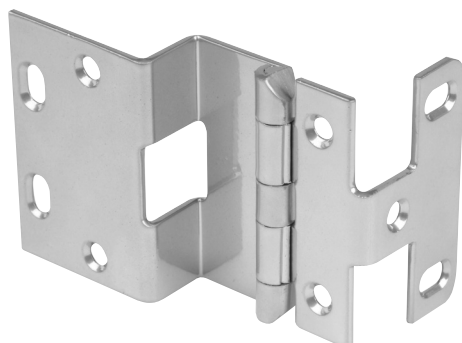


Side Panel: 3/4" (19mm)
 Door Thickness: 13/16" (20.6mm)
 Hinge Overlay: 23/32" (18.3mm)
 Door Overlay: 15/32" (11.9mm)
 Gauge: .095" (2.4mm)
 Hole Pattern: 32mm centers with 37mm setback
 Pack: 100/case, cell packed
Specify finish when ordering.

376SS: .090" Type 304 stainless steel
 Door Thickness: 50/case, cell packed



Part Number 375

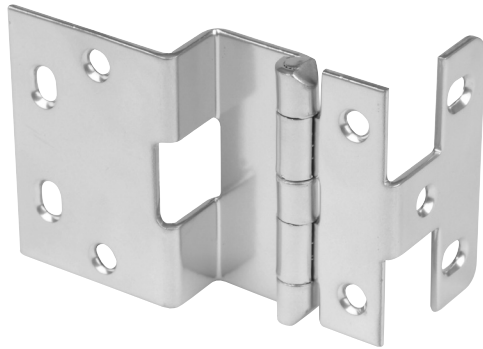


Side Panel: 13/16" (20.6mm)
 Door Thickness: 13/16" (20.6mm)
 Hinge Overlay: 25/32" (19.8mm)
 Door Overlay: 17/32" (13.5mm)
 Gauge: .095" (2.4mm)
 Hole Pattern: 32mm centers with 37mm setback
 Pack: 100/case, cell packed
Specify finish when ordering.



FIVE-KNUCKLE OVERLAY HINGES

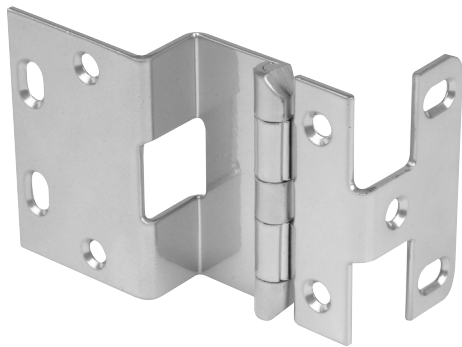
Part Number 454



Side Panel: 3/4" (19mm)
Door Thickness: 3/4" (19mm)
Hinge Overlay: 23/32" (18.3mm)
Door Overlay: 15/32" (11.9mm)
Gauge: .095" (2.4mm)
Hole Pattern: Side panel 32mm centers with 37mm setback, door wing holes 45mm on center
Pack: 100/case, cell packed
Specify finish when ordering.



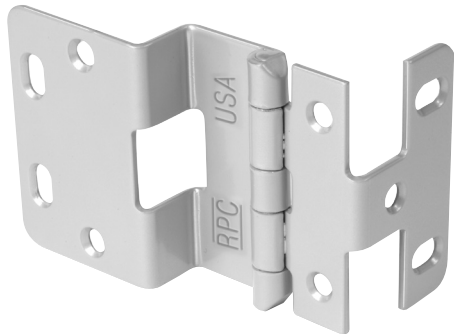
Part Number 455



Side Panel: 13/16" (20.6mm)
Door Thickness: 13/16" (20.6mm)
Hinge Overlay: 25/32" (19.8mm)
Door Overlay: 17/32" (13.5mm)
Gauge: .095" (2.4mm)
Hole Pattern: Side panel 32mm centers with 37mm setback, door wing holes 45mm on center
Pack: 100/case, cell packed
Specify finish when ordering.



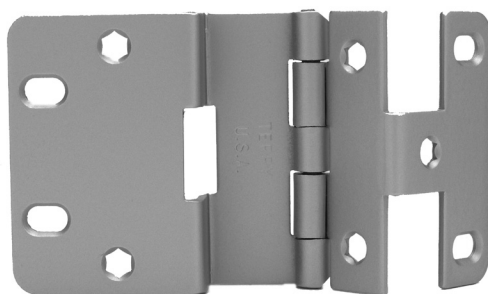
Part Number 456



Side Panel: 3/4" (19mm)
Door Thickness: 13/16" (20.6mm)
Hinge Overlay: 23/32" (18.3mm)
Door Overlay: 15/32" (11.9mm)
Gauge: .095" (2.4mm)
Hole Pattern: Side panel 32mm centers with 37mm setback, door wing holes 45mm on center
Pack: 100/case, cell packed
Specify finish when ordering.



Part Number 846

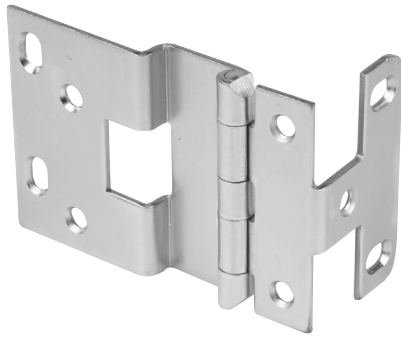


Side Panel: 3/4" (19mm)
Door Thickness: 13/16" (20.6mm)
Hinge Overlay: 23/32" (18.3mm)
Gauge: .095" (2.4mm)
Hole Pattern: Horizontal adjustment on side panel.
Pack: 100/case, cell packed
Specify finish when ordering.



FIVE-KNUCKLE OVERLAY HINGES

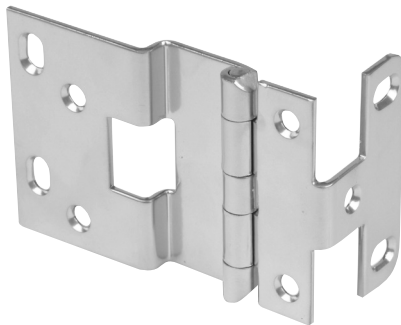
Part Number 848



Side Panel: 3/8" (9.5mm)
Door Thickness: 3/4" (19mm)
Hinge Overlay: 11/32" (8.7mm)
Door Overlay: 1/8" (3.2mm)
Gauge: .095" (2.4mm)
Hole Pattern: Staggered side panel mounting holes, can be used back-to-back on shared 3/4" side panel
Pack: 100/case, cell packed
Specify finish when ordering.



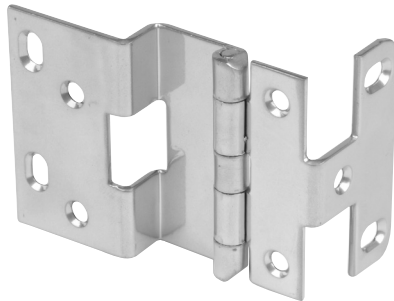
Part Number 849



Side Panel: 3/8" (9.5mm)
Door Thickness: 13/16" (20.6mm)
Hinge Overlay: 11/32" (8.7mm)
Door Overlay: 1/8" (3.2mm)
Gauge: .095" (2.4mm)
Hole Pattern: Staggered side panel mounting holes, can be used back-to-back on shared 3/4" side panel
Pack: 100/case, cell packed
Specify finish when ordering.



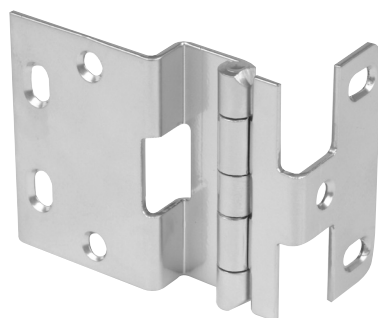
Part Number 853



Side Panel: 5/8" (15.9mm)
Door Thickness: 13/16" (20.6mm)
Hinge Overlay: 19/32" (15.1mm)
Door Overlay: 11/32" (8.7mm)
Gauge: .095" (2.4mm)
Hole Pattern: Staggered side panel mounting holes
Pack: 100/case, cell packed
Specify finish when ordering.



Part Number 8314, 8314SS

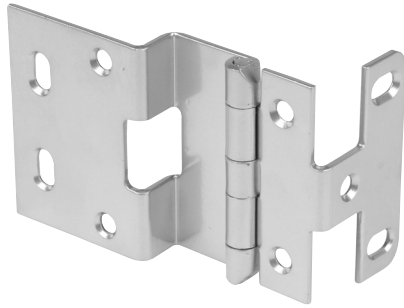


Side Panel: 1/2" (12.7mm)
Door Thickness: 1/2" (12.7mm)
Hinge Overlay: 1/2" (12.7mm)
Door Overlay: 9/32" (7.1mm)
Gauge: .090" (2.3mm)
Hole Pattern: Commonly used with Phenolic Materials, 32mm centers with 37mm setback
8314SS: .090" Type 304 Stainless Steel
8314 Pack: 100/case, cell packed
8314SS Pack: 50/case, cell packed



FIVE-KNUCKLE OVERLAY HINGES

Part Number 8362, 836255



Side Panel: 5/8" (15.9mm)
Door Thickness: 13/16" (20.6mm)
Hinge Overlay: 19/32" (15.1mm)
Door Overlay: 11/32" (8.7mm)
Gauge: .095" (2.4mm)
Hole Pattern: 32mm centers with 37mm setback
836255: .090" Type 304 Stainless Steel
8362 Pack: 100/case, cell packed
836255 Pack: 50/case, cell packed

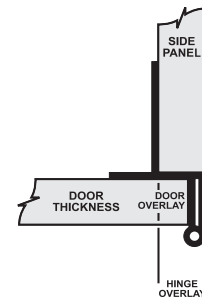


Specify finish when ordering.

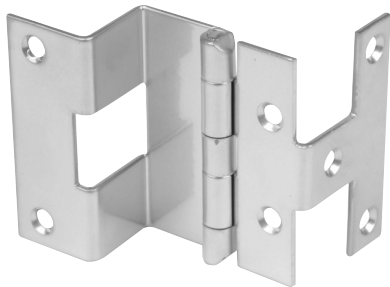


SPECIAL FIVE-KNUCKLE OVERLAY HINGES

These special overlay hinges will accommodate application requirements for doors with a thickness of up to 1-3/8" and side panels to 1" thick.



Part Number 388

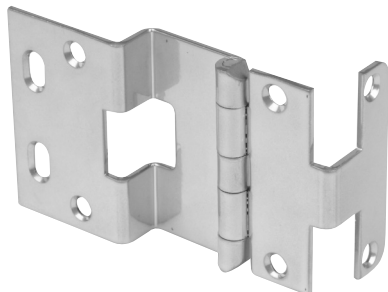


Side Panel: 1" (25.4mm)
Door Thickness: 13/16" (20.6mm)
Hinge Overlay: 1" (25.4mm)
Door Overlay: 25/32" (19.8mm)
Gauge: .083" (2.1mm)
Hole Pattern: 1" side panel leaf
Pack: 100/case, cell packed

Specify finish when ordering.



Part Number 844



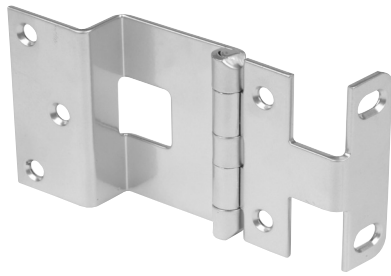
Side Panel: 5/8" (15.9mm)
Door Thickness: 1-1/16" (27mm)
Hinge Overlay: 19/32" (15.1mm)
Door Overlay: 11/32" (8.7mm)
Gauge: .095" (2.4mm)
Hole Pattern: 32mm centers
Pack: 100/case, cell packed

Specify finish when ordering.



SPECIAL FIVE KNUCKLE HINGES

Part Number 7036

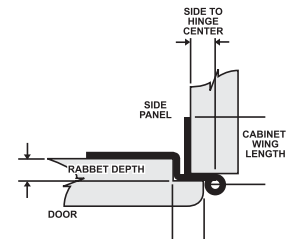


Side Panel: 3/4" (19mm)
 Door Thickness: 1-3/8" (34.9mm)
 Hinge Overlay: 23/32" (18.3mm)
 Door Overlay: 15/32" (11.9mm)
 Gauge: .095" (2.4mm)
 Hole Pattern: 1-1/4" side panel leaf
 Pack: 100/case, cell packed
Specify finish when ordering.

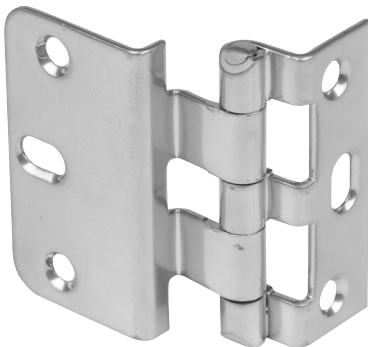


FIVE KNUCKLE LIPPED HINGES

*RPC five-knuckle lipped hinges are designed for use with inset doors having a rabbet depth of 3/8".
 Hospital tips are standard, contact RPC regarding your special needs.*



Part Number 349



Rabbet Depth: 3/8" (9.5mm)
 Side To Hinge Center: 25/64" (9.9mm)
 Cabinet Wing Length: 13/16" (20.6mm)
 Rabbet Width: 3/8" (10.3mm)
 Height: 2-1/2" (63.5mm)
 Gauge: .072" (1.8mm)
 Hole Pattern: Vertical side panel slot, horizontal door slot for easy mounting
 Pack: 100/case, cell packed
Specify finish when ordering



Part Number 362, 36255



Rabbet Depth: 3/8" (9.5mm)
 Side To Hinge Center: 7/16" (11.1mm)
 Cabinet Wing Length: 1-31/32" (50mm)
 Rabbet Width: 1/2" (13.5mm)
 Height: 2-3/4" (69.9mm)
 Gauge: .083" (2.1mm)
 Hole Pattern: Horizontal mounting slots on both side panel and door
36255: .078" Type 304 Stainless Steel
362 Pack: 100/case, cell packed
36255 Pack: 50/case, cell packed
Specify finish when ordering



RPC GRAVITY LOCKS

Secondary locking system for partitioned, two-door cabinets, door automatically locks when shut. Eliminates the need and expense of a keyed door lock on one door. Bolt and bracket are mounted on the cabinet partition, strike plate is mounted to the door.

Part Number GL01



Partition Thickness: GL01: 3/4" (19mm)
Bolt, bracket and strike plate are made of brushed 304 stainless steel
Packaged: Lock, strike plate, one #9 x 2-1/2" Phillips pivot screw, two #6 x 1/2" Phillips SMS, all screws are bright zinc plated.
Pack: B 250 cell packed/case
P 25 poly bagged/case



THREE-KNUCKLE, NON-MORTISE, INSTITUTIONAL HINGES

Hinge height: 2-3/4", same as five-knuckle hinges
ANSI/BHMA 156.9 Grade 3 compliant

Part Number H08-9XG60

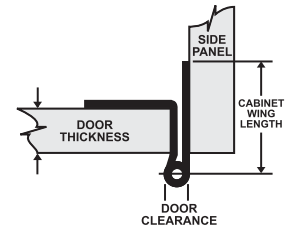


Side Panel: 3/4" (19mm)
Door Thickness: 13/16" (20.6mm)
Hinge Overlay: 23/32" (18.3mm)
Door Overlay: 5/8" (15.9mm)
Gauge: .090" (2.3mm)
Hole Pattern: 32mm centers with 37mm setback,
51mm (2") door wing
Pack: 100/case
Specify finish when ordering.

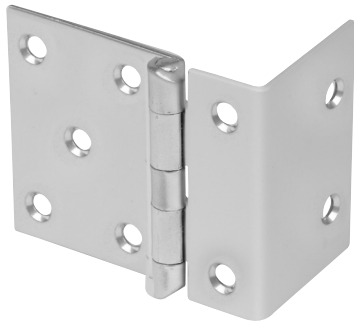


FLUSH HINGES

RPC flush hinges with hospital tips come in heights of 2", 2-1/2" and 2-3/4"



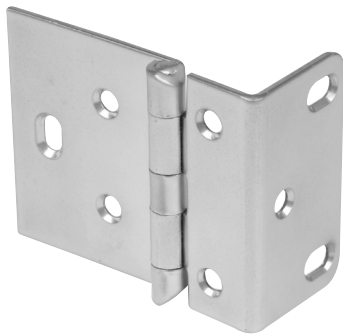
Part Number 860



Door Thickness: 3/4" (19mm)
 Door Clearance: 7/32" (5.6mm)
 Cabinet Wing Length: 1-59/64" (48.8mm)
 Barrel Height: 2-1/2" (63.5mm)
 Gauge: .083" (2.1mm)
 Pack: 100/case, cell packed
Specify finish when ordering



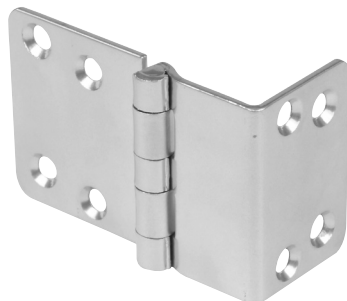
Part Number 2107



Door Thickness: 13/16" (20.6mm)
 Door Clearance: 1/4" (6.4mm)
 Cabinet Wing Length: 2-3/16" (55.6mm)
 Barrel Height: 2-3/4" (69.9mm)
 Gauge: .095" (2.4mm)
 Pack: 100/case, cell packed
Specify finish when ordering



Part Number 8581



Door Thickness: 13/16" (20.6mm)
 Door Clearance: 7/32" (5.6mm)
 Cabinet Wing Length: 1-7/8" (47.6mm)
 Barrel Height: 2" (50.8mm)
 Gauge: .083" (2.1mm)
 Pack: 100/case, cell packed
Specify finish when ordering



DOOR HARDWARE

Hardware for use on cabinet side panels and solid doors, and for use on wire doors.

RPC offers wood door hardware to match the mounting configuration also used on wire door cabinet designs such as the 2107 hinge and cabinet door hasps shown here.

Part Number 2101

Wood Door Label Holder

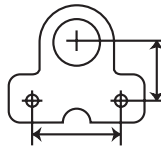


Side Panel: 3-3/16" wide x 1-1/2" high
Specify finish when ordering.



Part Number 2102

Inset Cabinet Hasp

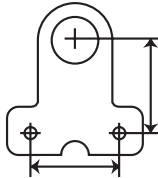


Height (A): 63/64" (25mm)
Distance Between Holes (B): 1-37/64" (40mm)
Specify finish when ordering.



Part Number 2103

Onset Cabinet Hasp

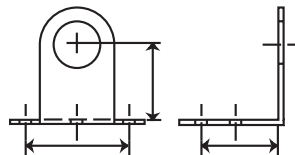


Height (A): 1-21/32" (42mm)
Distance Between Holes (B): 1-37/64" (40mm)
Specify finish when ordering.



Part Number 2104

Onset Solid Door Hasp

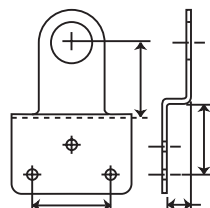


Height (A): 1-17/32" (34mm)
Distance Between Holes (B): 1-37/64" (40mm)
Mounting Hole Location (C): 1-1/2" (38.2mm)
Specify finish when ordering.



Part Number 2105

Cabinet Hasp For Overlay Solid Doors



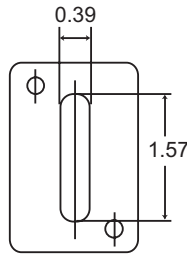
Height (A): 1-1/2" (38.2mm)
Distance Between Holes (B): 1-37/64" (40mm)
Mounting Hole Location (C): 1" (25.4mm)
Overlay: 35/64" (14mm)
Specify finish when ordering.



DOOR HARDWARE

Part Number 2106

Door Plate

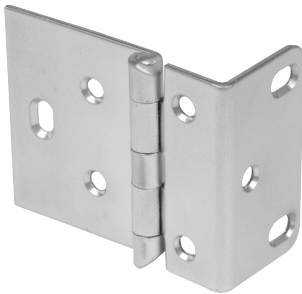


Size: 1-37/64" (40mm) x 2-23/64" (60mm)
 Vertical Slot: 10mm x 40mm
 Specify finish when ordering.



Part Number 2107

Flush Mount Hinge

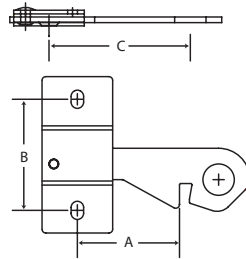
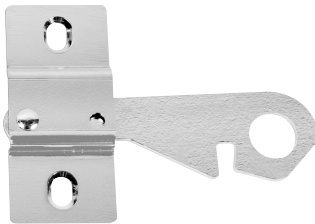


Door Thickness: 13/16" (20.6mm)
 Door Clearance: 1/4" (6.4mm)
 Cabinet Wing Length: 2-3/16" (55.6mm)
 Barrel Height: 2-3/4" (69.9mm)
 Gauge: .095" (2.4mm)
 Pack: 100/case, cell packed
 Specify finish when ordering.



Part Number 2801-26B

Right Hand Cabinet Latch (for doors hinged on LH side)

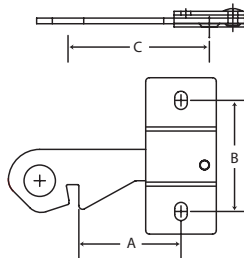


Height (A): 1-5/8" (41.3mm)
 Distance Between Holes (B): 1-25/32" (45mm)
 Mounting Hole Location (C): 2-1/4" (57.2mm)
 Available bright chrome plated only.



Part Number 2802-26B

Left Hand Cabinet Latch (for doors hinged on RH side)

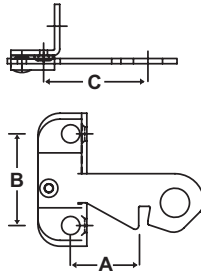


Height (A): 1-5/8" (41.3mm)
 Distance Between Holes (B): 1-25/32" (45mm)
 Mounting Hole Location (C): 2-1/4" (57.2mm)
 Available bright chrome plated only.



Part Number 2804-26B

Double Solid Door Latch

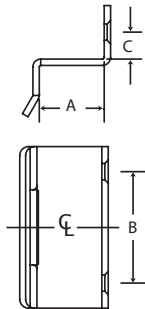


Height (A): $\frac{3}{4}$ " (19.1mm)
Distance Between Holes (B): $1\text{-}\frac{37}{64}$ " (40mm)
Mounting Hole Location (C): $\frac{1}{2}$ " (12.7mm)
Available bright chrome plated only.



Part Number 2813-26B

Solid Door Strike Plate

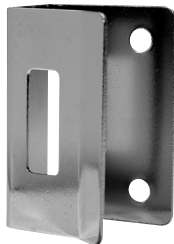


Height (A): $\frac{29}{32}$ " (23mm)
Distance Between Holes (B): $1\text{-}\frac{37}{64}$ " (40mm)
Mounting Hole Location (C): $\frac{21}{64}$ " (8.4mm)
Available bright chrome plated only.



Part Number 2814-26B

Thru Door Strike Plate for $\frac{13}{16}$ " Doors



Dimension: $2\text{-}\frac{3}{8}$ " (60mm) x $1\text{-}\frac{9}{16}$ " (40mm)
Distance Between Holes: $1\text{-}\frac{37}{64}$ " (40mm)
Mounting Hole Location: $1\text{-}\frac{1}{16}$ " (27mm)
Available bright chrome plated only.

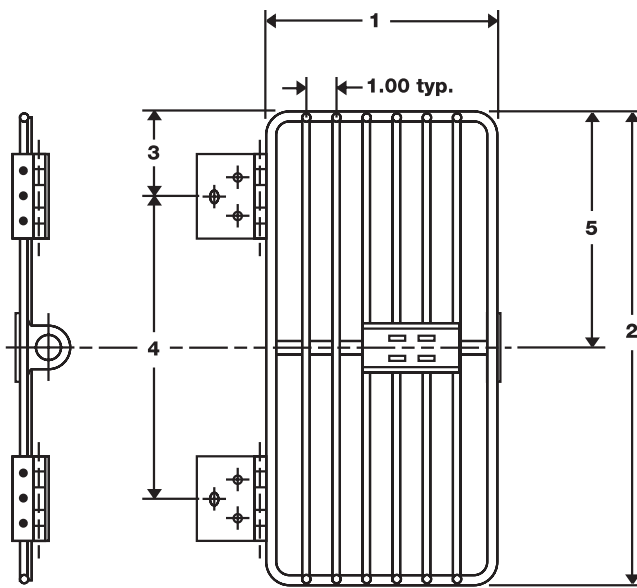
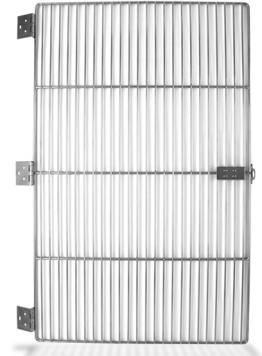


WIRE DOORS

RPC wire doors are suitable for music room, instrument and uniform storage as well as other commercial applications. Choose from RPC's wide selection of standard size wire doors. We can also supply doors to meet your custom size requirements. RPC can match your standard or custom color choice using a durable powder coat finish.

The door frame wire is 5/16" in diameter. Vertical door wires are 3/16" in diameter and have beveled ends to produce a clean, finished look.

Wire doors are supplied complete with 5-knuckle hinges, a hasp welded to the doorframe and a label holder welded to the vertical wires. A mating Cabinet Hasp - Inset (No. 2102) is included with each door. A No. 2103 Cabinet Hasp - Onset, may be substituted for use in onset applications.



Stay Close Wire Door Latch

RPC now offers an enhanced stay close wire door latch option. The cabinet latch and door strike are constructed of 13 gauge steel and are available in a bright chrome finish. This system allows the doors to be used in either a right or left hand application. The contour of the latch allows it to travel over the hasp until it falls into a positive locked position. This latching arrangement is available for both solid and wire grille doors. For security, the door can be locked with a padlock.



Ordering Information: To order wire doors with the Stay Close latch feature, add an "S" after the standard wire door part number (i.e., No. 2022S). The mating latch (left or right handed) will be included in your order.

Type	Part No.	Door Width in. (mm)	Door Height in. (mm)	Hinge Location in. (mm)	Distance Between Outside Hinges	Centerline Location	Number of Hinges
A*	2022	7.40" (188mm)	15.67" (398mm)	2.83" (72mm)	10.00" (254mm)	7.84" (199mm)	2
B*	2024	11.77" (299mm)	15.67" (398mm)	2.83" (72mm)	10.00" (254mm)	7.84" (199mm)	2
C*	2026	24.88" (632mm)	26.30" (668mm)	2.83" (72mm)	20.64" (524mm)	13.15" (334mm)	2
D*	2028	24.88" (632mm)	39.61" (1006mm)	2.83" (72mm)	33.95" (862mm)	19.80" (503mm)	3
E*	2030	22.83" (580mm)	79.45" (2018mm)	4.09" (104mm)	71.27" (1810mm)	39.73" (1009mm)	3 DD**
E*	2031	22.83" (580mm)	79.45" (2018mm)	4.09" (104mm)	71.27" (1810mm)	39.73" (1009mm)	3 DD**
F*	2032	24.88" (632mm)	79.45" (2018mm)	4.09" (104mm)	71.27" (1810mm)	39.73" (1009mm)	3
	2379	22.83" (580mm)	39.61" (1006mm)	2.83" (72mm)	33.95" (862mm)	19.80" (503mm)	3 DD**
	2742	22.83" (580mm)	39.61" (1006mm)	2.83" (72mm)	33.95" (862mm)	19.80" (503mm)	3 DD**
	2378	22.83" (580mm)	26.30" (668mm)	2.83" (72mm)	20.64" (524mm)	13.15" (334mm)	2 DD**
	2704	22.83" (580mm)	26.30" (668mm)	2.83" (72mm)	20.64" (524mm)	13.15" (334mm)	2 DD**
	2020	7.40" (188mm)	39.61" (1006mm)	2.83" (72mm)	33.95" (862mm)	19.80" (503mm)	2
	2384	7.40" (188mm)	26.30" (668mm)	2.83" (72mm)	20.64" (524mm)	13.15" (334mm)	2
Tolerances		+/- .06 (+/- 1.5)	+/- .06 (+/- 1.5)	+/- .03 (+/- 0.8)	+/- .06 (+/- 1.5)	+/- .03 (+/- 0.8)	N/A

* Standard Wire Door Sizes ** Double door w/label holder

Typical wire door cabinet dimension and design configurations are shown below. Contact RPC application engineering with questions or special requirements.

Applications for STANDARD WIRE DOORS

15 "A" Doors: (fig 1)	3 compartments wide inside dimension = 8.00" (203.2mm) 5 compartments high inside dimension = 14.85" (377.2mm)
9 "A", 1 "C" Doors: (fig 2)	3 compartments wide inside dimension = 8.00" (203.2mm) 3 (top) compartments high inside dimension = 14.85" (377.2mm) 1 compartment high inside dimension = 25.67" (652mm) 1 spacer, recessed approx. 1", 5.03" high (25.4mm, 127.8mm)
10 "B" Doors: (fig 3)	2 compartments wide inside dimension = 12.375" (314.3mm) 5 compartments high inside dimension = 14.85" (377.2mm)
6 "B", 1 "C" Doors: (fig 4)	2 compartments wide inside dimension = 12.375" (314.3mm) 3 (top) compartments high inside dimension = 14.85" (377.2mm) 1 compartment high inside dimension = 25.67" (652mm) 1 spacer, recessed approx. 1", 5.03" high (25.4mm, 127.8mm)
3 "C" Doors: (fig 5)	1 compartment wide inside dimension = 25.50" (647mm) 3 compartments high inside dimension = 25.67" (652mm)
2 "D" Doors: (fig 6)	1 compartment wide inside dimension = 25.50" (647mm) 2 compartments high inside dimension = 38.63" (981.2mm)
"E" Doors: (pair) (fig 7)	Cabinet (outside dm): = 48"w x 30"d x 84"h (1219.2mm x 762mm x 2133.6mm) Toe Kick: 4" (101.5mm) from floor to bottom of shelf, recessed approx. 3" (76.2mm) Vertical Members = 3/4" thick (19.1mm) Top Horizontal Member = 3/4" thick (19.1mm) Shelf 1" (25.4mm) thick, recessed approx. 1" (25.4mm) 1 compartment wide inside dimension = 46.50" (1118mm) 1 compartment high inside dimension = 78.25" (1987.6mm)
1 "F" Door: (fig 8)	1 compartment wide inside dimension = 25.50" (647.7mm) 1 compartment high inside dimension = 78.25" (1987.6mm)

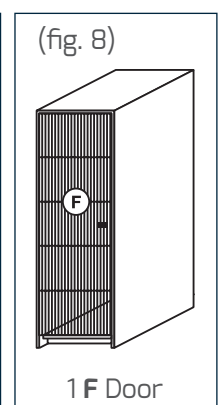
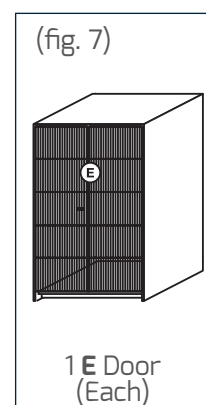
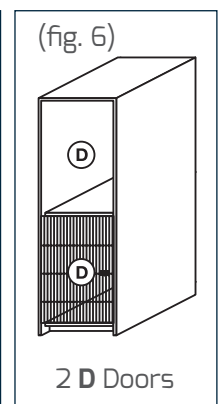
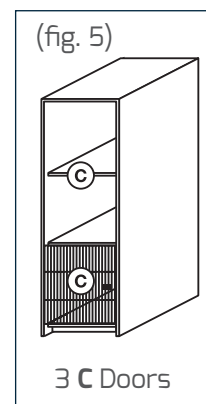
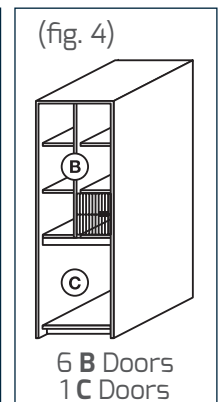
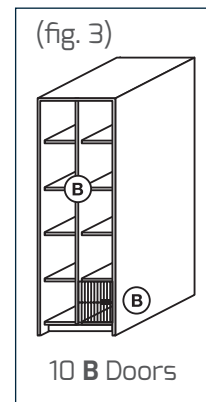
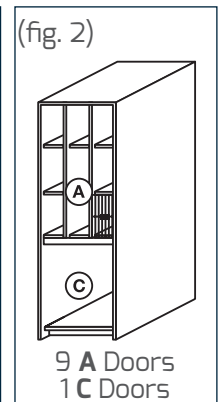
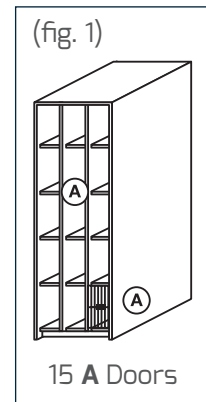
Cabinets for STANDARD WIRE DOORS (fig 1 thru 6, and fig 8)

Cabinet:	27" w x depth x 84" h, w/ 4" toe kick
Outside Dimensions:	(685mm x depth x 2134mm, w/ 101.6mm toe kick)
Vertical Members:	3/4" Thick (19.1mm)
Top Horizontal Member:	3/4" Thick (19.1mm)
Shelves:	1" (25.4mm) Thick, recessed

To Calculate WIRE DOORS for NON-STANDARD CABINETS

Door Width* inside compartment opening minus 9/16" (14.2mm)
Door Height..... inside compartment opening plus 23/32" (18.3mm)

*If the inside compartment opening is greater than 36-9/16" (928.6mm) in width, two doors will be required, or if double compartment doors are desired, calculate the doorwidth as follows: Inside compartment opening minus 27/32" (21.4mm) divided by 2.



CONTINUOUS HINGES

Continuous Hinge Ordering Codes:

CP2-22035-72

Hinge Type
(always "C")

Hinge Material

- "A" - Aluminum
- "B" - Brass
- "C" - Stainless Steel
- "S" - Steel
- "P" - Pre-plated (pp)

Blank or Hole Pattern

- 1 = Blank
- 2 = 2" centers (countersunk "ctsk")
- 3 = 2" centers (no ctsk)
- 4 = 4" centers, 2" staggered (ctsk)
- 5 = 4" centers, 2" staggered (no ctsk)
- 6 = Import
- 8 = Per print
- 9 = Unequal leaf

**Knuckle Configuration/
Gauge/Pin Diameter**

- 100 = 1/2" / .040 / .090
- 110 = 1/2" / .050 / .135
- 115 = 1/2" / .060 / .120
- 116 = 1/2" / .060 / .120 (3 1/2" width or greater)
- 117 = 1" / .060 / .120
- 120 = 1/2" / .060 / .187
- 122 = 1" / .060 / .187
- 125 = 1" / .074 / .187
- 130 = 1" / .074 / .250
- 133 = 2" / .074 / .250
- 140 = 2" / .090 / .250
- 161 = 2" / .120 / .375
- 189 = 1/2" / .074 / .250
- 220 = 1/2" / .040 / .090 (pp Nickel)
- 330 = 1/2" / .040 / .090 (pp Brass)

Stock Length
In inches

Pin Material

- "A" - Aluminum
- "B" - Brass
- "C" - Stainless Steel
- "S" - Steel

Width (open & flat)

- 1 = 1-1/16"
- 2 = 1-1/4"
- 3 = 1-1/2"
- 4 = 1-3/4"
- 5 = 2"
- 6 = 2-1/4"
- 7 = 2-1/2"

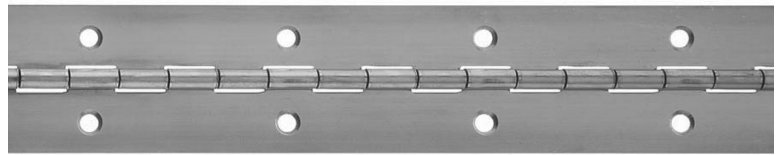
Example: CP2-22035-72 = Continuous hinge, pre-plated with 2" centers (ctsk), 1/2" joint length, .040" thickness, .090" pin diameter, 1 1/2" open width, steel pin material at 72 inches.

HOLE PATTERNS AND FINISHES

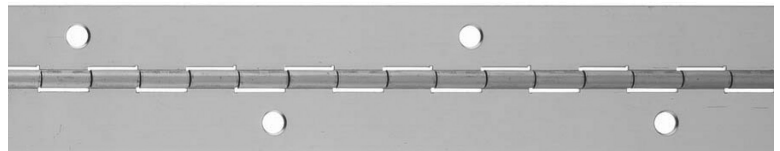
RPC has in-house powder coating capabilities for institutional and continuous hinges to be able to provide quick turn-a-round. This permits us to offer custom colors and color matching hinges and pulls for the same cabinet.

Finishes:

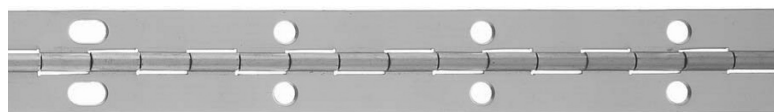
- Nickel Plated
- Brass Plated
- Custom Powder Coated



Holes countersunk on 2" centers



Holes countersunk on 4" centers staggered



We have the capability to run a combination of holes and/or slots in-line on standard 2" and 4" centers.

SPECIAL CONTINUOUS HINGES

Please contact our friendly and knowledgeable sales representatives when any need arises for an unequal leaf, special hole pattern or nonstock finish. Our special hinges are the most competitively priced in the market!

Formed Hinges 19 Gauge Steel (.040" – 1.0mm) .090" Steel Pin and 48" Lengths

Stock No.	Open Width (in.)	Wrap Width (in.)	Effective Leaf Width (in.)	Screw Hole Size	Finishes	Wrap	Packaged with Screw	Inventory Code
CP8-4780S	2-23/25	3/4	1.415	5	Brass	DoubleWrap	CPP-4780S	STK
CP9-4781S	2-1/4	3/4	1.415 / .745	5	Brass	Single Wrap	CPP-4781S	SPEC

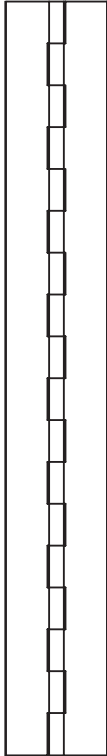
Distributor Packaged Sets 19 Gauge Steel (.040" – 1.0mm) .090" Steel Pin and 48" Lengths

(Packaged individually with screws)

Stock No.	Packaged Set of 10/without screws	Open Width (in.)	Effective Leaf Width (in)	Screw Hole Size	Inventory Code
CP7-2201S-721		1-1/16	0.44	4	STK
CP7-2202S-721	AP2-2202S-721	1-1/4	0.54	5	STK
CP7-2203S-301		1-1/2	0.66	5	STK
CP7-2203S-481		1-1/2	0.66	5	STK
CP7-2203S-721	AP2-2203S-721	1-1/2	0.66	5	STK
CP7-2203S-961		1-1/2	0.66	5	STK
CP7-2205S-481		2	0.91	5	STK
CP7-2205S-721	AP2-2205S-721	2	0.91	5	STK
CP7-2205S-961		2	0.91	5	STK
CP7-3301S-361		1-1/16	0.44	4	STK
CP7-3301S-481		1-1/16	0.44	4	STK
CP7-3301S-601		1-1/16	0.44	4	STK
CP7-3301S-721		1-1/16	0.44	4	STK
CP7-3302S-721	AP2-3302S-721	1-1/4	0.54	5	STK
CP7-3303S-301		1-1/2	0.66	5	STK
CP7-3303S-3C1		1-1/2	0.66	5	STK
CP7-3303S-481		1-1/2	0.66	5	STK
CP7-3303S-601		1-1/2	0.66	5	STK
CP7-3303S-721	AP2-3303S-721	1-1/2	0.66	5	STK
CP7-3305S-721	AP2-3305S-721	1-1/2	0.66	5	STK

If no Stock Length is indicated, this is a non-stocked but standard product that will be manufactured to your finish and length requirements in about 4 weeks.

STEEL CONTINUOUS HINGES



Type CR1010 Blank Hole Pattern

19 Gauge Steel

(.040" – 1.0mm)

Medium Light Gauge

.090" Steel Pin

1/2" Joint Length

Stock No.	Effective Open Width (in.)	Stock Leaf Width (in.)	Length (Ft.)	Inventory Code
CS1-10015	1-1/16	0.443	-	SPEC
CS1-10025	1-1/4	0.537	6, 8	STK
CS1-10035	1-1/2	0.662	-	SPEC

Type CR1010 Blank Hole Pattern

18 Gauge Steel

(.050" – 1.3mm)

Medium Gauge

.135" Steel Pin

1/2" Joint Length

Stock No.	Effective Open Width (in.)	Stock Leaf Width (in.)	Length (Ft.)	Inventory Code
CS1-11025	1-1/4	0.515	-	SPEC
CS1-11035	1-1/2	0.640	6	STK

Type CR1010 Blank Hole Pattern

16 Gauge Steel

(.060" – 1.5mm)

Medium Heavy Gauge

.120" Steel Pin

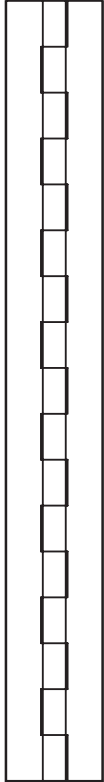
1/2" Joint Length

Stock No.	Effective Open Width (in.)	Stock Leaf Width (in.)	Length (Ft.)	Inventory Code
CS1-11535	1-1/2	0.630	-	STK
CS1-11555	2	0.880	-	STK
CS1-11595	3	1.380	-	SPEC

If no Stock Length is indicated, this is a non-stocked but standard product that will be manufactured to your finish and length requirements in about 4 weeks.

Inventory Codes: STK - Stock, SPEC - Special

STEEL CONTINUOUS HINGES



Type CR1010 Blank Hole Pattern

16 Gauge Steel

(.060" – 1.5mm)

Medium Heavy Gauge

.187" Steel Pin

1/2" Joint Length

Stock No.	Effective Open Width (in.)	Stock Leaf Width (in.)	Length (Ft.)	Inventory Code
CS1-12055	2	0.847	-	SPEC

Type CR1010 Blank Hole Pattern

14 Gauge Steel

(.074" – 1.9mm)

Heavy Gauge

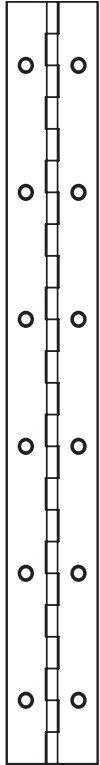
.250" Steel Pin

1" Joint Length

Stock No.	Effective Open Width (in.)	Stock Leaf Width (in.)	Length (Ft.)	Inventory Code
CS1-13035	1-1/2	0.551	-	SPEC
CS1-13055	2	0.801	-	SPEC

Custom finishes and powder coat colors can be provided to meet your specific needs. Please contact RPC Customer Service for details and lead times.

STEEL CONTINUOUS HINGES



Type CR1010 Standard Hole Pattern Countersunk on 2" Centers

19 Gauge Steel

(.040" – 1.0mm)

.090" Steel Pin

1/2" Joint Length

Stock No.	Effective Open Width (in.)	Stock Leaf Width (in.)	Screw Hole Size	Length (Ft.)	Inventory Code
CS2-1001S	1-1/16	.4428	4	-	STK
CS2-1002S	1-1/4	.5365	5	-	SPEC
CS2-1003S	1-1/2	.6615	5	-	STK
CS2-1005S	2	.9105	5	-	STK

Type CR1010 Standard Hole Pattern Countersunk on 2" Centers

18 Gauge Steel

(.050" – 1.3mm)

.135" Steel Pin

1/2" Joint Length

Stock No.	Effective Open Width (in.)	Stock Leaf Width (in.)	Screw Hole Size	Length (Ft.)	Inventory Code
CS2-1103S	1-1/2	.640	6	-	SPEC
CS2-1107S	2-1/2	1.140	6	-	SPEC

Type CR1010 Standard Hole Pattern Countersunk on 2" Centers

16 Gauge Steel

(.060" – 1.5mm)

.120" Steel Pin

1/2" Joint Length

Stock No.	Effective Open Width (in.)	Stock Leaf Width (in.)	Screw Hole Size	Length (Ft.)	Inventory Code
CS2-1153S	1-1/2	0.630	-	-	STK
CS2-1155S	2	0.880	-	-	STK

Type 304 Standard Hole Pattern Countersunk on 2" Centers

19 Gauge Steel

(.040" – 1.0mm)

Medium Light Gauge

.090" Steel Pin

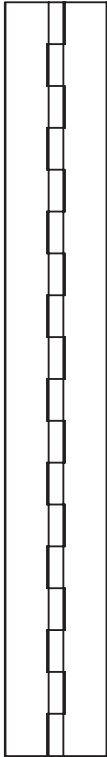
1/2" Joint Length

Stock No.	Effective Open Width (in.)	Stock Leaf Width (in.)	Screw Hole Size	Length (Ft.)	Inventory Code
CC2-1001C	1-1/16	.4428	4	-	STK
CC2-1002C	1-1/4	.5365	5	-	SPEC
CC2-1003C	1-1/2	.6615	5	-	STK
CC2-1005C	2	.9105	5	-	STK

If no Stock Length is indicated, this is a non-stocked but standard product that will be manufactured to your finish and length requirements in about 4 weeks.

Inventory Codes: STK - Stock, SPEC - Special

STAINLESS STEEL CONTINUOUS HINGES



Type 304 Blank Hole Pattern

19 Gauge Steel (.040" – 1.0mm)	Effective	Stock Open Width (in.)	Leaf Width (in.)	Length (Ft.)	Inventory Code
Medium Light Gauge	CC1-1001C	1-1/16	.443	-	SPEC
.090" Steel Pin	CC1-1003C	1-1/2	.662	-	STK
1/2" Joint Length	CC1-1005C	2	.912	-	STK

Type 304 Blank Hole Pattern

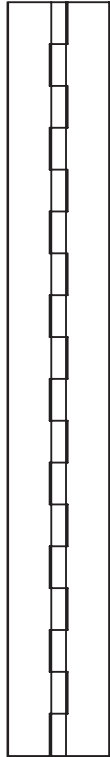
16 Gauge Steel (.060" – 1.5mm)	Effective	Stock Leaf Width (in.)	Length (Ft.)	Inventory Code
Medium Gauge	CC1-1153C	1-1/2	.630	SPEC
.120" Steel Pin	CC1-1155C	2	.880	SPEC
1/2" Joint Length	CC1-1159C	3	1.380	SPEC

Type 304 Blank Hole Pattern

14 Gauge Steel (.074" – 1.9mm)	Effective	Stock Leaf Width (in.)	Length (Ft.)	Inventory Code
Heavy Gauge	CC1-1305C	2	.801	SPEC
.250" Steel Pin				
1" Joint Length				

Custom finishes and powder coat colors can be provided to meet your specific needs.
Please contact RPC Customer Service for details and lead times.

ALUMINUM CONTINUOUS HINGES



Type 5052 Blank Hole Pattern

19 Gauge Aluminum

(.040" – 1.0mm)

Medium Light Gauge

.090" Aluminum Pin

1/2" Joint Length

Stock No.	Effective Open Width (in.)	Stock Leaf Width (in.)	Length (Ft.)	Inventory Code
CA1-1001A	1-1/16	.443	-	SPEC
CA1-1002A	1-1/4	.537	-	SPEC
CA1-1003A	1-1/2	.662	-	SPEC

Type 5052 Blank Hole Pattern

18 Gauge Aluminum

(.050" – 1.3mm)

Medium Gauge

.135" Aluminum Pin

1/2" Joint Length

Stock No.	Effective Open Width (in.)	Stock Leaf Width (in.)	Length (Ft.)	Inventory Code
CA1-1103A	1-1/2	.635	-	STK

Type 5052 Blank Hole Pattern

16 Gauge Aluminum

(.060" – 1.5mm)

Medium Gauge

.120" Aluminum Pin

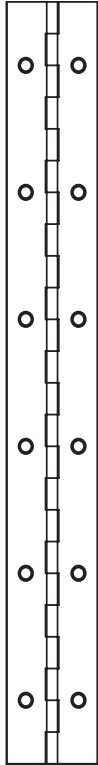
1/2" Joint Length

Stock No.	Effective Open Width (in.)	Stock Leaf Width (in.)	Length (Ft.)	Inventory Code
CA1-1153A	1-1/2	.630	-	SPEC
CA1-1155A	2	.880	-	SPEC
CA1-1159A	3	1.380	-	SPEC

If no Stock Length is indicated, this is a non-stocked but standard product that will be manufactured to your finish and length requirements in about 4 weeks.

Inventory Codes: STK - Stock, SPEC - Special

ALUMINUM CONTINUOUS HINGES



Type 5052 Holes on 2" Standard Centers, Countersunk

19 Gauge Steel

(.040" – 1.0mm)

.090" Aluminum Pin

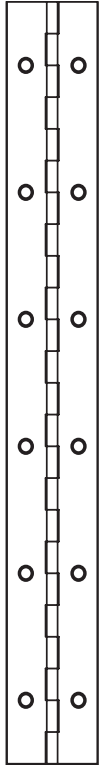
1/2" Joint Length

Stock No.	Effective Open Width (in.)	Stock Leaf Width (in.)	Screw Hole Size	Length (Ft.)	Inventory Code
CA2-1003A	1-1/2	.6615	5	-	STK

Custom finishes and powder coat colors can be provided to meet your specific needs.

Please contact RPC Customer Service for details and lead times.

PRE-PLATED CONTINUOUS HINGES



Brass Plated Standard Hole Pattern Countersunk on 2" Centers

19 Gauge Steel

(.040" – 1.0mm)

.090" Steel Pin

1/2" Joint Length

Stock No.	Effective Open Width (in.)	Stock Leaf Width (in.)	Screw Hole Size	Length (Ft.)	Inventory Code
CP2-33015	1-1/16	.4428	4	6,8	STK
CP2-33025	1-1/4	.5365	5	6,8	STK
CP2-33035	1-1/2	.6615	5	6,8	STK
CP2-33055	2	.9105	5	6,8	STK

Nickel Plated Standard Hole Pattern Countersunk on 2" Centers

19 Gauge Steel

(.040" – 1.0mm)

.090" Steel Pin

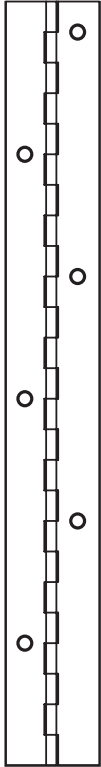
1/2" Joint Length

Stock No.	Effective Open Width (in.)	Stock Leaf Width (in.)	Screw Hole Size	Length (Ft.)	Inventory Code
CP2-22015	1-1/16	.4428	4	6	STK
CP2-22025	1-1/4	.5365	5	6	STK
CP2-22035	1-1/2	.6615	5	6	STK
CP2-22055	2	.9105	5	-	STK

If no Stock Length is indicated, this is a non-stocked but standard product that will be manufactured to your finish and length requirements in about 4 weeks.

Inventory Codes: STK - Stock, SPEC - Special

PRE-PLATED CONTINUOUS HINGES



Brass Plated Staggered Hole Pattern Countersunk on 4" Centers

19 Gauge Steel

(.040" – 1.0mm)

.090" Steel Pin

1/2" Joint Length

Stock No.	Effective Open Width (in.)	Stock Leaf Width (in.)	Screw Hole Size	Length (Ft.)	Inventory Code
CP4-3303S	1-1/2	.6615	5	-	STK
CP4-3305S	2	.9105	5	-	STK

Nickel Plated Staggered Hole Pattern Countersunk on 4" Centers

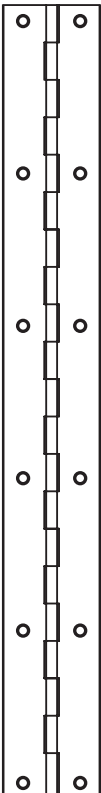
19 Gauge Steel

(.040" – 1.0mm)

.090" Steel Pin

1/2" Joint Length

Stock No.	Effective Open Width (in.)	Stock Leaf Width (in.)	Screw Hole Size	Length (Ft.)	Inventory Code
CP4-2203S	1-1/2	.6615	5	-	SPEC
CP4-2205S	2	.9105	5	-	STK



PRE-PLATED CONTINUOUS HINGES IN 100' COILS

100' Coils Countersunk on 2" Centers

19 Gauge Steel

.090" Steel Pin

1/2" Joint Length

Stock No.	Effective Open Width (in.)	Stock Leaf Width (in.)	Material Thickness	Screw Hole Size	Finish	Inventory Code
CP6-2202S	1-1/4	0.54	01.0mm	5	Nickel	STK
CP6-2203S	1-1/2	0.66	01.0mm	5	Nickel	STK
CP6-3302S	1-1/4	0.54	01.0mm	5	Brass	STK
CP6-3303S	1-1/2	0.66	01.0mm	5	Brass	STK

Custom finishes and powder coat colors can be provided to meet your specific needs.

Please contact RPC Customer Service for details and lead times.

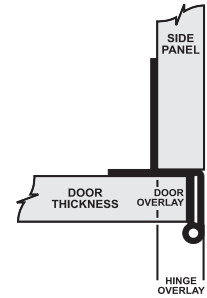
OVERLAY HINGES

This TERRY™ five-knuckle institutional hinge was designed and manufactured to provide a quality hinge at a value price to meet the needs of today's competitive market place.

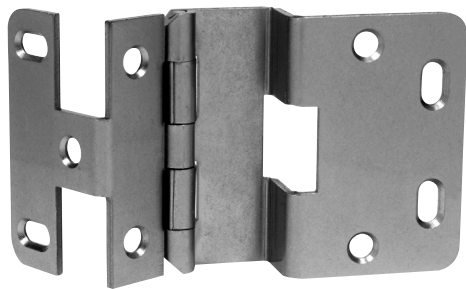
Exceeds ANSI/BHMA 156.9 Grade 1 requirements.

Hospital tips, 2-3/4" hinge height, 270° opening angle

All mounting holes are countersunk for #8 flat head screws.



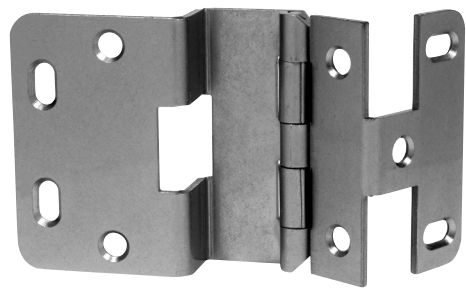
Part Number 74



Side Panel: 3/4" (19mm)
 Door Thickness: 3/4" (19mm)
 Door Overlay: 15/32" (11.9mm)
 Gauge: .090" (2.3mm)
 Hole Pattern: 32mm centers with 37mm setback
 Finishes: Plated dull chrome – 26D
 Chrome (powder coat) – CPC
 Black (powder coat) - BL
 Pack: 100/case, poly bagged



Part Number 76



Side Panel: 3/4" (19mm)
 Door Thickness: 13/16" (20.6mm)
 Door Overlay: 15/32" (11.9mm)
 Gauge: .090" (2.3mm)
 Hole Pattern: 32mm centers with 37mm setback
 Finishes: Plated dull chrome – 26D
 Chrome (powder coat) – CPC
 Black (powder coat) - BL
 Pack: 100/case, poly bagged
76SS: .090" Type 304 Stainless Steel



NON-MORTISE HINGES

Part Number H03-041A5

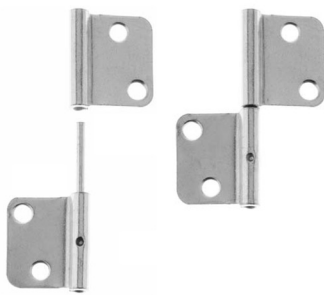


Height: 2" (50.8mm)
Large Leaf Width: 5/8" (15.9mm)
Pin: Tight Pin, .030" offset
Gauge: .050" (1.3mm)
Screw Size: #5
Pack: 1,000/case
Available in zinc.



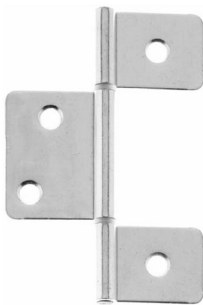
LIFT-OFF & THREE LEAF HINGES

Part Number H57-80450/H56-80450



Height: 2-1/8" (54mm)
Open Width: 1-9/16" (52mm)
Type Swaging: Full
Gauge: .050" (1.3mm)
Screw Size: #4
Pack: 2,000/case
Specify finish when ordering.

Part Number H03-03970

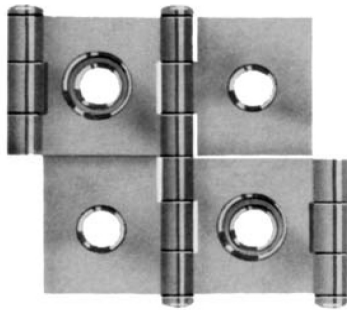


Height: 3-7/16" (87.3mm)
Open Width: 2-5/16" (58.7mm)
Type Swaging: Full
Gauge: .050" (1.3mm)
Screw Size: #6
Pack: 500/case
Available in bright brass, and nickel.



DOUBLE ACTING SCREEN HINGES

Part Number H03-04001-03



Height: 1-3/4" (44.5mm)
Width: for 3/4" panels or doors
Gauge: .040" (1.1mm)
Screw Size: #6
Pack: 400/case
Available in bright brass only.

Part Number H01-04004-03

Gravity Pivot Hinge Set w/Screws For Café or Bar Doors



Height: 1-1/4" (44.5mm)
Width: 1" (25.4mm) For 3/4" to 1-3/4" panels
Screw Size: #8 x 3/4"
Pack: 100/case
Available in bright brass only.

CASEWORK HARDWARE

Part Number M03-99389-17

Elbow Catch Set with Catch & Plate



Length: 2-1/4" (57.2mm)
Width: 1-1/8" (28.6mm)
Height: 1" (25.4mm)
Pack: 100 sets/case

Available in zinc only.



Part Number M03-00039-26

Elbow Catch Set with Catch, Plate & Screws



Length: 1-1/4" (31.8mm)
Width: 1" (25.4mm)
Height: 1-1/8" (28.6mm)
Pack: Poly bagged set, 100 sets/case

Available in bright chrome only.

Part Number M08-99391-17

Jumbo Roller Catch Set with Catch & Plate

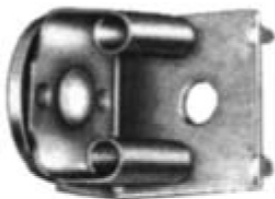


Length: 1-9/16" (39.7mm)
Width: 1-7/8" (47.6mm)
Height: 15/16" (23.8mm)
Pack: 50 sets/case

Available in white zinc only.

Part Number B03-07000

Button Catch Inside Clip



Length: 5/8" (15.9mm)
Width: 1-1/8" (28.6mm)
Height: 1" (25.4mm)
Pack: 500 case

Available in white zinc.

CASEWORK HARDWARE

Part Number B03-07001

Button Catch Reverse Clip

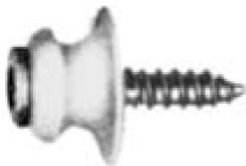


Length: 1" (25.4mm)
Width: 5/8" (15.9mm)
Height: 3/4" (19mm)
Pack: 500 case

Available in bright brass and white zinc.

Part Number B03-07002-17

Button For Catch

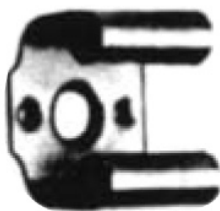


Length: 7/8" (22.2mm) with screw
Width: 1/2" (12.7mm) diameter
Height: 5/16" (7.9mm)
Pack: 500/case

Available in white zinc.

Part Number B03-07003-17

Receiver Catch



Length: 3/8" (9.5 mm)
Width: 5/8" (15.9mm)
Height: 1/2" (12.7mm)
Pack: 7,500/case

Available in white zinc only.

Part Number M03-00033-03

Insert Bullet Catch Set with Nail



Diameter: 1/4" (4.4mm) — **M03-00033**
Pack: 500 sets/case

Available in bright brass only.

CASEWORK HARDWARE

Part Number M03-4400B-03

Double Ball Catch — Solid Brass



Length: 1-45/64" (43.3mm)
Width: 5/16" (7.9mm)
Height: 3/8" (9.5mm)
Pack: 100 sets/case

Available in solid brass only.

Part Number B02-06512-A6

Double Wardrobe Hook with Screws



Length: 2-1/4" (57.2mm)
Hook Width: 2-7/8" (73mm)
Base Width: 1-1/2" (38.1mm)
Pack: 50/carton; 500/case

Available in polished aluminum only.

Part Number B02-06513-A6

Double Ceiling Hook with Screws



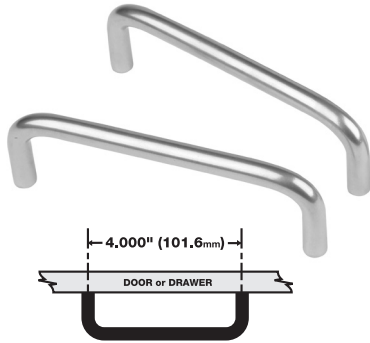
Length: 2-1/4" (57.2mm)
Hook Width: 3-1/4" (82.6mm)
Base Width: 1-7/8" (47.6mm)
Pack: 30/carton; 300/case

Available in polished aluminum only.

PULLS

TERRY pulls are available with 4" or 96mm mounting hole centers. They are brushed stainless steel or carbon steel with a powder coat finish or dull chrome plating. Pulls use two #8-32 machine screws which are not provided.

Part Number P604, P604SS



Material Diameter: 5/16" (8mm)
On Center Hole Spacing: 4" (101.6mm)
Protrusion: 1-1/4" (31.8mm)
Pack: 100/case, cell packed

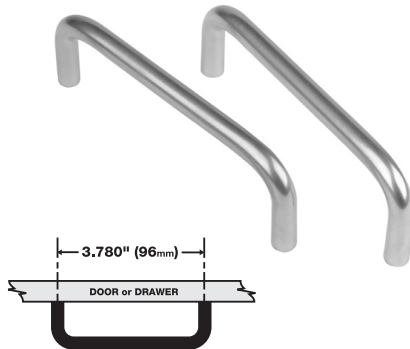
Available chrome plated or powder coat.

P604SS

Pack: 50/case, poly bagged
P4604ERSS Type 304 stainless steel
4" OC mounting holes with longer offset. Handle protrudes 1.44" for greater clearance for ADA applications.



Part Number P605, P605SS



Material Diameter: 5/16" (8mm)
On Center Hole Spacing: 3-25/32" (96mm)
Protrusion: 1-1/4" (31.8mm)
Pack: 100/case, cell packed

Available chrome plated or powder coat.

P605SS

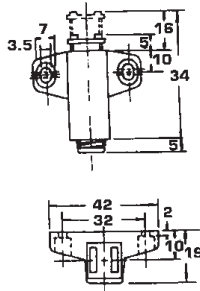
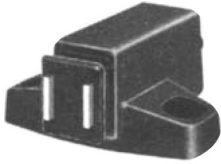
Pack: 50/case, case, cell packed



MAGNETIC TOUCH LATCHES

Part Number B01-06969-55

Single Magnetic Touch Latch with 32mm Hole Centers

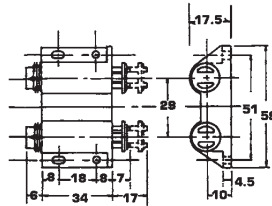


Length: 1-3/4" (44.5mm)
Width: 1-21/32" (42mm)
Height: 3/4" (19mm)
Screw Size: #4
Pack: 100/case

Available in black only.

Part Number B01-V6931

Double Magnetic Touch Latch



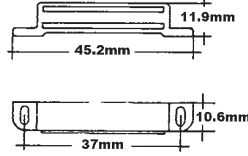
Length: 1-13/16" (46mm)
Width: 2-1/4" (57.2mm)
Height: 11/16" (17.5mm)
Screw Size: #4
Pack: 125/case

Available in brown only.



MAGNETIC CATCHES

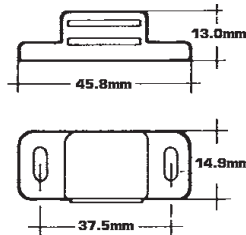
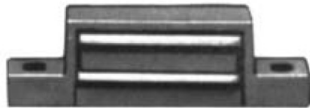
Part Number M03-03934



Holding Power: 12 lbs
 Length: 1-3/4" (45.2mm)
 Width: 13/32" (10.6mm)
 Height: 15/32" (11.9mm)
 Screw Size: #4
 Pack: 300/case

Available in white and brown.

Part Number M03-X3921

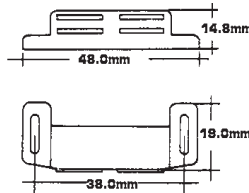


Holding Power: 8.5 lbs
 Length: 1-13/16" (45.8mm)
 Width: 19/32" (14.9mm)
 Height: 1/2" (13mm)
 Screw Size: #4
 Pack: 250/case

Available in white and brown.

M02-X3921: Poly bagged set with strike plate & screws
Available in white and brown.

Part Number M03-03926



Holding Power: 9 lbs
 Length: 1-7/8" (48mm)
 Width: 3/4" (19mm)
 Height: 9/16" (14.8mm)
 Screw Size: #4
 Pack: 500/case

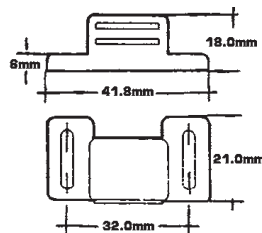
Available in white and brown.

M02-03926-66: Poly bagged set with strike plate & screws

Pack: 400/carton – 800/case

Available in white only.

Part Number M03-03932

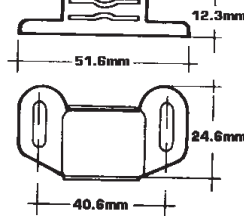
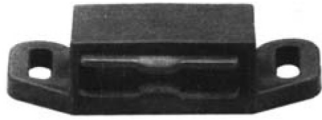


Holding Power: 8 lbs
 Length: 1-21/32" (41.8mm)
 Width: 27/32" (21mm)
 Height: 23/32" (18mm)
 Screw Size: #4
 Pack: 250/case

Available in brown only.

MAGNETIC CATCHES

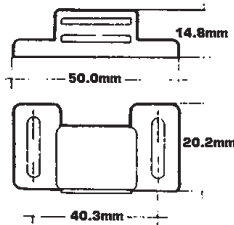
Part Number M03-03923-77



Holding Power: 8 lbs
 Length: 2-5/16" (51.6mm)
 Width: 31/32" (24.6mm)
 Height: 1/2" (12.3mm)
 Screw Size: #4
 Pack: 250/case

Available in brown only.

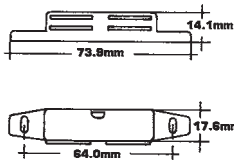
Part Number M03-03925



Holding Power: 8 lbs
 Length: 2" (50mm)
 Width: 19/32" (20.2mm)
 Height: 13/32" (14.8mm)
 Screw Size: #4
 Pack: 500/case

Available in white only.

Part Number M09-03944-66

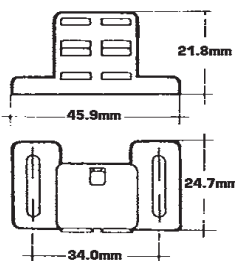
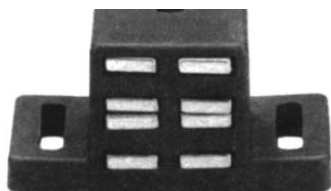


Holding Power: 12 lbs
 Length: 2-5/16" (73.9mm)
 Width: 11/16" (17.6mm)
 Height: 9/16" (14.1mm)
 Screw Size: #5
 Pack: 500/case

Available in white only.



Part Number M03-03950



Holding Power: 25 lbs
 Length: 1-13/16" (45.9mm)
 Width: 63/64" (24.7mm)
 Height: 7/8" (21.8mm)
 Screw Size: #6
 Pack: 50/carton – 500/case

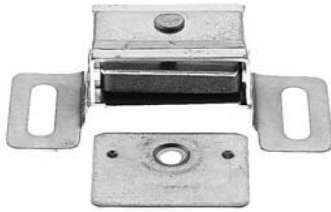
Available in white and brown.

M02-03950: Poly bagged set with strike plate & screws
 Pack: 200/case



MAGNETIC CATCHES

Part Number M02-X3946-01



Holding Power: 15 lbs
Length: 2-1/4" (57.2mm)
Width: 1" (25.4mm)
Height: 5/8" (15.9mm)
Pack: 100/carton — 500/case, poly bagged w/strike and screws
Available in aluminum only.

Part Number M04-02901

**Rectangular
Strike Plate**



Length: 1-7/32" (31mm)
Width: 29/32" (23mm)
Screw Size: #5
Pack: 2,000/case

LID SUPPORTS

Part Number **LS3-61918-03**



Hand: Reversible
Tension: Adjustable
Arm Length: 6-1/4" (158.8mm)
Arm Width: 9/16" (14.3mm)
Length Of Slot: 5-1/2" (139.7mm)
Screw Size: #5
Pack: 100/case

Available in bright brass only.

Part Number **LS3-6L919-03, LS3-6R919-03**



Hand: **6L919** – Left, **6R919** - Right
Tension: Adjustable
Arm Length: 6-1/4" (158.8mm)
Arm Width: 9/16" (14.3mm)
Length Of Slot: 5-1/2" (139.7mm)
Screw Size: #5
Pack: 200/case

Available in bright brass only.

Part Number **LS3-6R929-03**



Hand: Right
Tension: Adjustable
Arm Length: 5" (127mm)
Arm Width: 9/16" (14.3mm)
Length Of Slot: 4-11/16" (119.1mm)
Screw Size: #5
Pack: 200/case

Available in bright brass only.

Part Number **LS3-61909-03**



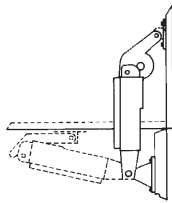
Hand: Reversible
Tension: Adjustable
Arm Length: 6-3/4" (171.5mm)
Arm Width: 3/4" (19mm)
Length Of Slot: 6" (152.4mm)
Screw Size: #5
Pack: 100/case

Available in bright brass only.

LID SUPPORTS

Part Number LS6-R1575-06, LS6-L1575-06

Self-Balancing Heavy-Duty Lid Support, Back Mounted

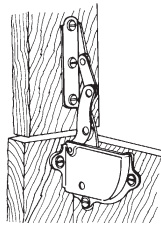


*BACK MOUNTED

Hand: **R1575** – right, **L1575** - left
 Tension: 35 lbs
 Open Length: 6" (152.4mm)
 Arm Width: 15/16" (23.8mm)
 Screw Size: #6
 Pack: 100/carton – 200/case
Available in statuary bronze only.

Part Number H02-CH000-03 (pair)

Combination Hinge and Support

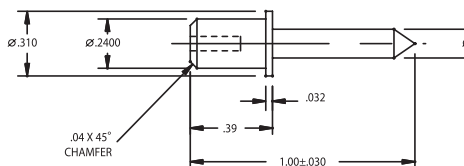


Hand: Left and Right
 Tension: none
 Open Length: 3-3/4" (95.3mm)
 Arm Width: 1" (25.4mm)
 Length Of Slot: 5-1/2" (139.7mm)
 Screw Size: #6
 Pack: 50/case
Available in bright brass only.

SHUTTER PINS

Part Number PN9-00500-01

Standard Shutter Pin



Pin Diameter: .140" (3.6mm)
 Head Diameter: .240" (6.1mm)
 Full Length: 1.035" (26.3mm)
 Pack: 15.000/case
 Nylon



Part Number B01-34056

Spoon Type Shelf Support



Bore: 3/16" (5mm)
Length: 3/4" (19mm)
Width: 5/16" (7.9mm)
Pack: 1,000/case

Available in antique brass, bright brass or nickel.

Part Number B01-34050

Spoon Type Shelf Support



Bore: 1/4" (6.5mm)
Length: 3/4" (19mm)
Width: 1/2" (7.9mm)
Pack: 1,000/case

Available in antique brass, black nickle, bright brass or nickel.

Part Number B08-34051-14

Right Angle Shelf Rest with Quake Pin Hole



Bore: 1/4" (6.5mm)
Length: 23/32" (18.2mm)
Width: 33/64" (13.2mm)
Pack: 1,000/case

Available in nickel only.

Part Number B03-3406X-14

Right Angle Shelf Rest With Quake Pin Hole



Bore: 3/16" (5mm)
Length: 23/32" (18.2mm)
Width: 33/64" (13.2mm)
Pack: 1,000/case

Available in nickel only.

STANDARDS & BRACKETS

Single Standards and Brackets Refer to Chart

Strong brackets designed with high loads in mind.



Equipped with a unique locking mechanism for added security and immobilization.

Reinforced and slotted for ease of installation.

Applications: Industrial, warehouse, garage, general storage in various business environments.



SINGLE STANDARDS

Width:	7/8" (22.2mm)
Depth:	3/16" (4.8mm)
Length:	B01-59241-174 24"
	B01-59301-174 30"
	B01-59361-174 36"
	B01-59481-174 48"
	B01-59601-174 60"
	B01-59721-174 72"
	B01-59841-174 84"
	B01-58961-174 96"

Adjustments:	every 2" (50.8mm)
Finish:	Bright zinc
Pack:	10/case



SINGLE BRACKETS

Length:	B01-53081-224 8"
	B01-53101-224 10"
	B01-53121-224 12"
	B01-53141-224 14"
	B01-53161-224 16"
	B01-53181-224 18"
	B01-53201-224 20"
	B01-53221-224 22"
	B01-53241-224 24"
Finish:	Brushed zinc
Pack:	20/case



Double Standards and Brackets Refer to Chart

Double strong industrial brackets that secure weightloads for commercial/ industrial applications. Various sizes available allowing endless configuration possibilities.



Double slots and lip for secure/ level shelving strength.

Applications: utilitarian, commercial and industrial adjustable storage areas.



DOUBLE STANDARDS

Width:	7/8" (22.2mm)
Depth:	3/16" (4.8mm)
Length:	B01-60241-174 24"
	B01-60361-174 36"
	B01-60481-174 48"
	B01-60601-174 60"
	B01-60721-174 72"
	B01-60841-174 84"
	B01-60961-174 96"

Adjustments:	every 1" (25.4mm), double slots
Finish:	Bright zinc
Pack:	20/case



DOUBLE BRACKETS

Length:	B01-54081-224 8"
	B01-54101-224 10"
	B01-54121-224 12"
	B01-54141-224 14"
	B01-54161-224 16"
	B01-54181-224 18"
	B01-54201-224 20"
	B01-54221-224 22"
	B01-54241-224 24"
Finish:	Brushed zinc
Pack:	20/case



Premier Double Standards and Brackets

Refer to Chart

Smooth and attractive, the premier brackets are for a designer look that carries a substantial load.



Reinforced and slotted for ease of installation.

Applications: pantries, retail, display, office, schools, businesses and institutions.



PREMIER DOUBLE STANDARDS

Width:	7/8" (22.2mm)
Depth:	11/16" (17.5mm)
Length:	B01-61161-WH4 16.5"
	B01-61281-WH4 28"
	B01-61391-WH4 39"
	B01-61481-WH4 48"
	B01-61631-WH4 63"
	B01-61781-WH4 78"
	B01-61947-WH4 94"

Adjustments: every 1" (25.4mm), double slots

Finish: White
Pack: 10/case

PREMIER DOUBLE BRACKETS

Length:	B01-56051-WH4 5"
	B01-56071-WH4 7"
	B01-56091-WH4 9"
	B01-56101-WH4 10.5"
	B01-56121-WH4 12.5"
	B01-56141-WH4 14.5"
	B01-56181-WH4 18.5"
	B01-56241-WH4 24.5"

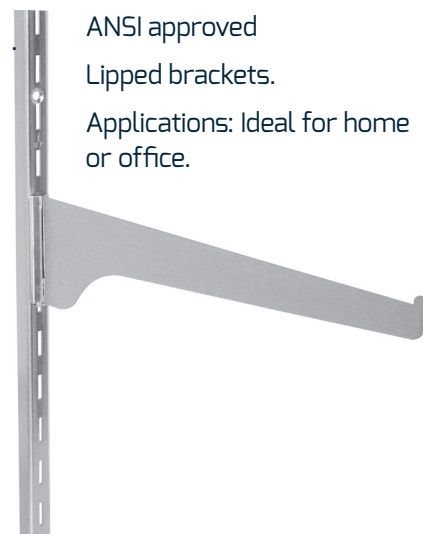
Finish: White
Pack: 10/case



Regular Standards and Brackets - Zinc

Refer to Chart

Lighter duty standard with vertical slots and double locking brackets with an attractive brushed zinc finish.



ANSI approved

Lipped brackets.

Applications: Ideal for home or office.



REGULAR STANDARDS

Width:	1/2" (22.2mm)
Depth:	3/16" (4.8mm)
Length:	B01-64121-174 12"
	B01-64241-174 24"
	B01-64361-174 36"
	B01-64481-174 48"
	B01-64601-174 60"
	B01-64721-174 72"
	B01-64961-174 96"

Adjustments: every 1/2" (12.7mm)

Finish: Bright zinc
Pack: 10/case

REGULAR BRACKETS

Length:	B01-65041-224 4"
	B01-65061-224 6"
	B01-65081-224 8"
	B01-65101-224 10"
	B01-65121-224 12"
	B01-65141-224 14"
	B01-65161-224 16"
	B01-65181-224 18"
	B01-65201-224 20"
	B01-65221-224 22"
	B01-65241-224 24"

Finish: Brushed zinc
Pack: 10/case

BRACKETS, STANDARDS, PILASTERS & CLIPS

Regular Standards and Brackets - White Refer to Chart

Lighter duty standard with vertical slots and double locking brackets in a bright white finish.



ANSI approved.
Lipped brackets.
Applications: Ideal for home or office.



REGULAR STANDARDS

Width: 1/2" (22.2mm)
Depth: 3/16" (4.8mm)
Length: **B01-64121-WH4** 12"
B01-64241-WH4 24"
B01-64361-WH4 36"
B01-64481-WH4 48"
B01-64601-WH4 60"
B01-64721-WH4 72"
B01-64961-WH4 96"
Adjustments: every 1/2" (12.7mm)
Finish: White
Pack: 10/case

REGULAR BRACKETS

Length:
B01-65041-WH4 4"
B01-65061-WH4 6"
B01-65081-WH4 8"
B01-65101-WH4 10"
B01-65121-WH4 12"
B01-65141-WH4 14"
B01-65161-WH4 16"
B01-65181-WH4 18"
B01-65201-WH4 20"
B01-65221-WH4 22"
B01-65241-WH4 24"
Finish: White
Pack: 10/case

Pilasters & Clips Refer to Chart

The pilasters and clips are designed to discreetly hold various shelf materials, like glass, particle board, wood, etc.



Pre-drilled nail holes and stamped numbers for easy installation.

Applications: bookcases, closets, entertainment centers and cabinets.



PILASTER STANDARDS

Width: 7/8" (22.2mm)
Depth: 3/16" (4.8mm)
Length: **B01-58181-174** 18"
B01-58241-174 24"
B01-58301-174 30"
B01-58361-174 36"
B01-58481-174 48"
B01-58601-174 60"
B01-58721-174 72"
B01-58841-174 84"
B01-58961-174 96"
Adjustments: every 1/2" (12.7mm)
Finish: Bright zinc
Pack: 100 same size/case

PILASTER CLIPS

Finish:
B01-CLP11-17 - 100/box
B01-CLP12-17 - 1,000/case
Pack: Bright zinc

WORK STATION BRACKETS

Steel Work Station Brackets



- >> 1/8" steel
- >> Load capacity exceeds 1000 lbs. per pair
- >> Available in four colors: Black, White, Almond, Gray
- >> Primer finish available
- >> Eight sizes
- >> Multiple mounting hole locations (1/4")
- >> Larger sizes feature cut outs for wiring
- >> Sold and packaged in multiple pairs equal number of rights & lefts

Stock Number	Size	Pairs/Wgt/Box
B08-05081	5" x 8"	5 prs/10 lbs
B08-08121	8" x 12"	5 prs/21 lbs
B08-12181	12" x 18"	3 prs/18 lbs
B08-15211	15" x 21"	3 prs/27 lbs
B08-18181	18" x 18"	3 prs/26 lbs
B08-18241	18" x 24"	3 prs/31 lbs
B08-24241	24" x 24"	3 prs/48 lbs
B08-24291	24" x 29"	2 prs/38 lbs

Stainless Steel Work Station Brackets



- >> Genuine 304 series stainless steel
- >> Natural brushed finish
- >> Non magnetic
- >> Twelve gauge
- >> Three sizes
- >> Multiple mounting holes
- >> Cut outs for wiring
- >> Packed in pairs, one right, one left

Stock Number	Size	Pairs/Wgt/Box
B08-08121-SS4	8" x 12"	2 pcs/3.8 lbs
B08-15211-SS4	15" x 21"	2 pcs/8.5 lbs
B08-18241-SS4	18" x 24"	2 pcs/9.8 lbs

WORK STATION BRACKETS

Steel Concealed Brackets

Includes Fasteners – 3/8" - 16" x 4" Bolts



- >> 1/8" and 1/4" steel
- >> Available in four colors:
Black, White, Almond, Gray
- >> Four sizes
- >> Includes mounting hardware 3/8" x 4"
carriage bolts, hex nuts and flat washers
- >> Mounts directly to wall studs
- >> 2 pieces/box

Stock Number	Size	Pairs/Wgt/Box
B08-OCH09	9" x 12"	2 pcs/11 lbs
B08-OCH12	12" x 12"	2 pcs/12 lbs
B08-OCH18	18" x 18"	2 pcs/18 lbs
B08-OCH24	24" x 18"	2 pcs/22 lbs

Extended Steel Concealed Brackets

Includes Fasteners – 3/8" - 16" x 4" Bolts



Stock Number	Size	Pairs/Wgt/Box
B08-ECH09	9" x 20"	2 pcs/14 lbs
B08-ECH12	12" x 20"	2 pcs/16 lbs
B08-ECH18	18" x 26"	2 pcs/22 lbs
B08-ECH24	24" x 26"	2 pcs/24 lbs

RPC-TERRY TERMS AND CONDITIONS

Payment Terms: Net 30 days on approved credit.

Freight: FOB, Rockford, Illinois.

RPC-TERRY Part Numbering: Please provide the complete part number and quantity when entering your order.

Minimum Order Quantity: Institutional hinges are sold in case quantities only. For Special butt hinge, continuous hinge, shutter hinge or general casework hardware minimums, contact RPC Customer Service.

Minimum Order Amount: \$250.00 or an additional handling fee of \$25.00 will be assessed per order. Minimum order quantities for parts noted as Special will remain in effect. Contact RPC Customer Service for specific details.

Both RPC and Terry part numbers may be combined to reach the \$250.00 minimum order amount.

Order Acceptance: Order acceptance is subject to credit approval.

Return Policy: Buyer's request for return of catalog product must be submitted in writing to Rockford Process Control. A Return Material Authorization (RMA) number will be issued to the Buyer as authorization from RPC to return the product. The RMA number must be referenced on all Buyer's shipping and debit memo documents prior to Buyer's shipment of product to RPC.

For return of saleable catalog product, a minimum restocking charge of 25% of the value of the returned product will apply. Return freight is to be prepaid by the Buyer.

Product that is being returned due to defects in material or workmanship is to be shipped to RPC via best-way surface, freight collect.

Order Cancellations: Order cancellations must be submitted in writing and will be accepted only when reasonable and approved by Rockford Process Control. No cancellations will be accepted prior to 30 days of original ship date.

Pricing: Prices are subject to change without notice.

MEASUREMENT CROSS REFERENCE

Fraction	Inch	Millimeter
1/64	.0156	.3968
1/32	.0312	.7937
3/64	.0468	1.191
1/16	.0625	1.588
5/64	.0781	1.984
3/32	.0937	2.381
7/64	.1093	2.778
1/8	.125	3.175
9/64	.1406	3.572
5/32	.1562	3.969
11/64	.1718	4.366
3/16	.1875	4.763
13/64	.2031	5.159
7/32	.2187	5.556
15/64	.2343	5.953
1/4	.25	6.350
17/64	.2656	6.747
9/32	.2812	7.144
19/64	.2968	7.541
5/16	.3125	7.938
21/64	.3281	8.334
11/32	.3437	8.731
23/64	.3593	9.128
3/8	.375	9.525
25/64	.3906	9.921
13/32	.4062	10.319
27/64	.4218	10.715
7/16	.4375	11.113
29/64	.4531	11.509
15/32	.4687	11.906
31/64	.4844	12.303
1/2	.5	12.700

Fraction	Inch	Millimeter
33/64	.5156	13.097
17/32	.5312	13.494
35/64	.5468	13.891
9/16	.5625	14.288
37/64	.5781	14.684
19/32	.5937	15.081
39/64	.6093	15.478
5/8	.625	15.875
41/64	.6406	16.272
21/32	.6562	16.669
43/64	.6718	17.066
11/16	.6875	17.463
45/64	.7031	17.859
23/32	.7187	18.256
47/64	.7343	18.653
3/4	.75	19.050
49/64	.7656	19.447
25/32	.7812	19.844
51/64	.7968	20.241
13/16	.8125	20.638
53/64	.8281	21.034
27/32	.8437	21.431
55/64	.8593	21.828
7/8	.875	22.225
57/64	.8906	22.622
29/32	.9062	23.019
59/64	.9218	23.416
15/16	.9375	23.813
61/64	.9531	24.209
31/32	.9687	24.606
63/64	.9843	25.003
1	1	25.400

Millimeter to Inch Equivalents			
1.5	1/16	14	9/16
2	3/32	15	19/32
3	1/8	16	5/8
4	5/32	17	21/32
5	3/16	17.5	11/16
5.5	7/32	18	23/32
6	1/4	19	3/4
7	9/32	20	25/32
8	5/16	20.5	13/16
9	11/32	21	27/32
9.5	3/8	22	7/8
10	13/32	23	29/32
11	7/16	24	15/16
12	15/32	24.5	31/32
13	1/2	25.4	1

Millimeter to Inch Equivalents			
250	9-7/8	500	19-11/16
270	10-5/8	510	20-1/16
300	11-13/16	512	20-1/8
350	13-3/4	550	21-5/8
400	15-3/4	570	22-7/16
418	16-7/16	582	22-15/16
430	16-15/16	600	23-5/8
440	17-5/16	650	25
450	17-3/4	700	27-9/16
470	18-1/2	750	29-9/16

1 mm = .03937 inches

1 inch = 25.4 mm

1 meter = 3.2809 feet

1kg = 2.2 lbs.

INDEX

Part Number	Page	Part Number	Page	Part Number	Page
74	27	B01-53101	41	B01-60841-174	41
76	27	B01-53121	41	B01-60961-174	41
349	9	B01-53141	41	B01-61161-WH4	42
362	9	B01-53161	41	B01-61281-WH4	42
36255	9	B01-53181	41	B01-61391-WH4	42
374	5	B01-53201	41	B01-61481-WH4	42
375	5	B01-53221	41	B01-61631-WH4	42
376	5	B01-53241	41	B01-61781-WH4	42
37655	5	B01-54081-224	41	B01-61941-WH4	42
388	8	B01-54101-224	41	B01-64121-174	42
454	6	B01-54121-224	41	B01-64121-WH4	43
455	6	B01-54141-224	41	B01-64241-174	42
456	6	B01-54161-224	41	B01-64241-WH4	43
844	8	B01-54181-224	41	B01-64361-174	42
846	6	B01-54201-224	41	B01-64361-WH4	43
848	7	B01-54221-224	41	B01-64481-174	42
849	7	B01-54241-224	41	B01-64481-WH4	43
853	7	B01-56051-WH4	42	B01-64601-174	42
860	11	B01-56071-WH4	42	B01-64601-WH4	43
2101	12	B01-56091-WH4	42	B01-64721-174	42
2102	12	B01-56101-WH4	42	B01-64721-WH4	43
2103	12	B01-56121-WH4	42	B01-64961-174	42
2104	12	B01-56141-WH4	42	B01-64961-WH4	43
2105	12	B01-56181-WH4	42	B01-65041-224	42
2106	13	B01-56241-WH4	42	B01-65041-WH4	43
2107	11, 13	B01-58181-174	43	B01-65061-224	42
2801-26B	13	B01-58241-174	43	B01-65061-WH4	43
2802-26B	13	B01-58301-174	43	B01-65081-224	42
2804-26B	14	B01-58361-174	43	B01-65081-WH4	43
2813-26B	14	B01-58481-174	43	B01-65101-224	42
2814-26B	14	B01-58601-174	43	B01-65101-WH4	43
7036	9	B01-58721-174	43	B01-65121-224	42
8314	7	B01-58841-174	43	B01-65121-WH4	43
831455	7	B01-58961-174	43	B01-65141-224	42
8362	8	B01-59241-174	41	B01-65141-WH4	43
836255	8	B01-59301-174	41	B01-65161-224	42
8581	11	B01-59361-174	41	B01-65161-WH4	43
AP2-22025	18	B01-59481-174	41	B01-65181-224	42
AP2-22035	18	B01-59601-174	41	B01-65181-WH4	43
AP2-22055	18	B01-59721-174	41	B01-65201-224	42
AP2-33025	18	B01-59841-174	41	B01-65201-WH4	43
AP2-33035	18	B01-59961-174	41	B01-65221-224	42
AP2-33055	18	B01-60241-174	41	B01-65221-WH4	43
B01-06969-55	34	B01-60361-174	41	B01-65241-224	42
B01-34050	40	B01-60481-174	41	B01-65241-WH4	43
B01-34056	40	B01-60601-174	41	B01-CLP11-17	43
B01-53081	41	B01-60721-174	41	B01-CLP12-17	43

Part Number	Page	Part Number	Page	Part Number	Page
B01-V6931	34	CP2-2201S	25	GL01	10
B02-06512-A6.....	32	CP2-2202S	25	H02-CH000-03	39
B02-06513-A6.....	32	CP2-2203S	25	H03-03970.....	28
B03-07000.....	30	CP2-2205S	25	H03-04001-03	29
B03-07001.....	31	CP2-3301S	25	H03-04004-03	29
B03-07002-17	31	CP2-3302S	25	H03-041A5	28
B03-07003-17	31	CP2-3303S	25	H08-9XG60.....	10
B08-05081	44	CP2-3305S	25	H56-80450	28
B08-08121	44	CP4-2203S	26	H57-80450.....	28
B08-08121-554.....	44	CP4-2205S	26	LS3-61909-03	38
B08-0CH09	45	CP4-3303S	26	LS3-61918-03	38
B08-0CH12.....	45	CP4-3305S	26	LS3-6L919-03	38
B08-0CH18	45	CP6-2202S	26	LS3-6R919-03	38
B08-0CH24.....	45	CP6-2203S	26	LS3-6R929-03	38
B08-12181.....	44	CP6-3302S	26	LS6-L1575-06.....	39
B08-15211.....	44	CP6-3303S	26	LS6-R1575-06	39
B08-15211-554.....	44	CP7-2201S	18	M02-X3946-01.....	37
B08-18181	44	CP7-2202S.....	18	M03-00033-03.....	31
B08-18241.....	44	CP7-2203S.....	18	M03-00039-26.....	30
B08-18241-554.....	44	CP7-2205S	18	M03-03923-77.....	36
B08-24241.....	44	CP7-3301S	18	M03-03925	36
B08-24291.....	44	CP7-3302S.....	18	M03-03926.....	35
B08-34051-14.....	40	CP7-3303S.....	18	M03-03932	35
B08-3406X-14.....	40	CP7-3305S.....	18	M03-03934	35
B08-ECH09.....	45	CP8-4780S	18	M03-03950	36
B08-ECH12.....	45	CP9-4781S	18	M03-44008-03.....	32
B08-ECH18.....	45	CPP-4780S	18	M03-99389-17	30
B08-ECH24.....	45	CPP-4781S	18	M03-A9307-17	30
CA1-1001A	23	CS1-1001S.....	19	M03-X3921	35
CA1-1002A	23	CS1-1002S.....	19	M04-02901.....	37
CA1-1003A	23	CS1-1003S.....	19	M08-99391-17	30
CA1-1103A	23	CS1-1102S.....	19	M09-03944-66.....	36
CA1-1153A	23	CS1-1103S.....	19	P604	33
CA1-1155A	23	CS1-1153S.....	19	P6045S.....	33
CA1-1159A	23	CS1-1155S.....	19	P605	33
CA2-1003A	24	CS1-1159S.....	19	P6055S.....	33
CC1-1001C.....	22	CS1-1205S.....	20	PN9-00500-01.....	39
CC1-1003C.....	22	CS1-1303S.....	20		
CC1-1005C.....	22	CS1-1305S.....	20		
CC1-1153C	22	CS2-1001S.....	21		
CC1-1155C	22	CS2-1002S.....	21		
CC1-1159C	22	CS2-1003S.....	21		
CC1-1305C	22	CS2-1005S.....	21		
CC2-1001C.....	22	CS2-1103S.....	21		
CC2-1002C.....	22	CS2-1107S	21		
CC2-1003C	22	CS2-1153S	21		
CC2-1005C	22	CS2-1155S	21		

NOTES

Lined area for notes, consisting of multiple horizontal lines across the page.





ROCKFORD PROCESS CONTROL, INC.
2020 SEVENTH STREET | ROCKFORD, IL 61104
800.228.3779 | phone 815.966.2000 | fax 815.966.2026
CUSTOMER SERVICE HOURS | 7:30am – 5:00pm CST
sales@rockfordprocess.com | www.rockfordprocess.com